

EXISTING CONDITIONS



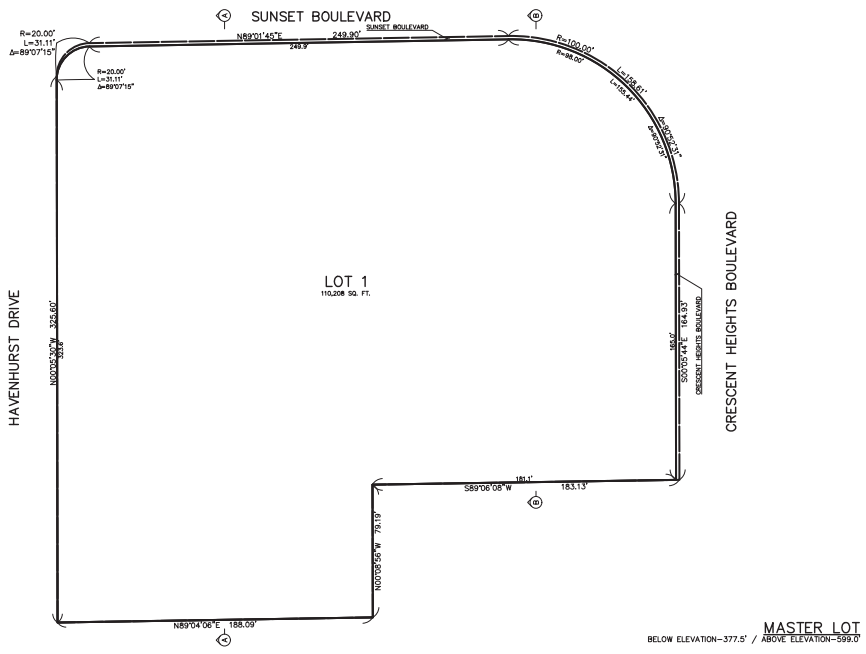
G.R.G.	▲				
G.R.G.	▲				
J.D.C.	▲	4/1/16	REVISED TENTATIVE LOTS	GRS	MJR

CITY OF LOS ANGELES BENCHMARK NO. 13-16551
 L.A. CITY PSM STAMPED "1987 13-16551"
 IN NE CORNER CB, N/O SUNSET BLVD., 27 FT.
 W/O HAVENHURST DR W. P/L PRODUCED
 403,648 FEET
 2000 ADJ. (NAVDS8)

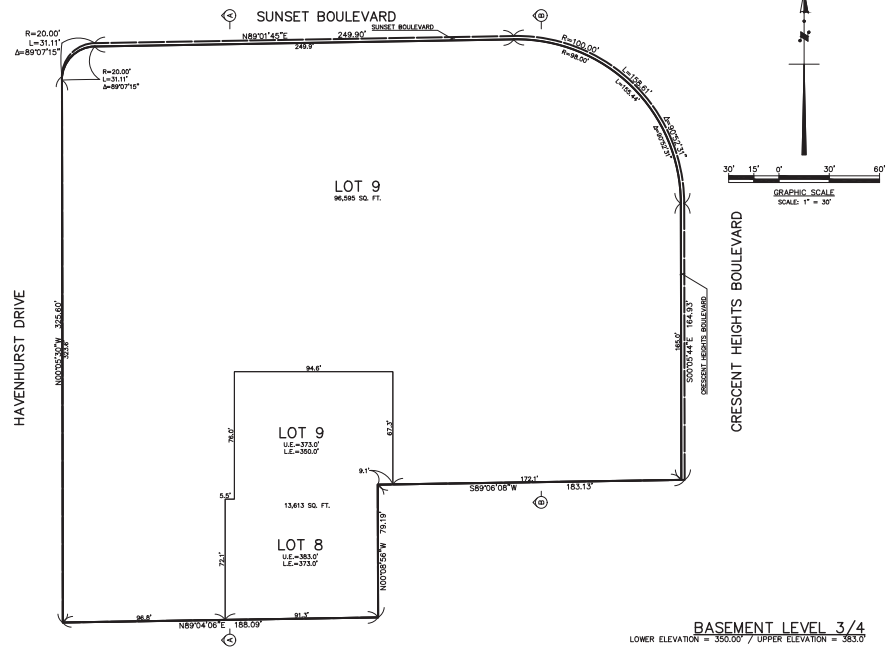
PSOMAS
 555 South Flower Street, Suite 4300
 Los Angeles, CA 90071
 (213) 223-1400 (213) 223-1444 fax
 www.psomas.com

VESTING TENTATIVE TRACT MAP FOR SUBDIVISION AND CONDOMINIUM PURPOSES:
VESTING TENTATIVE TRACT NO. 72370
 8150 SUNSET BOULEVARD
 IN THE CITY OF LOS ANGELES COUNTY OF LOS ANGELES STATE OF CALIFORNIA

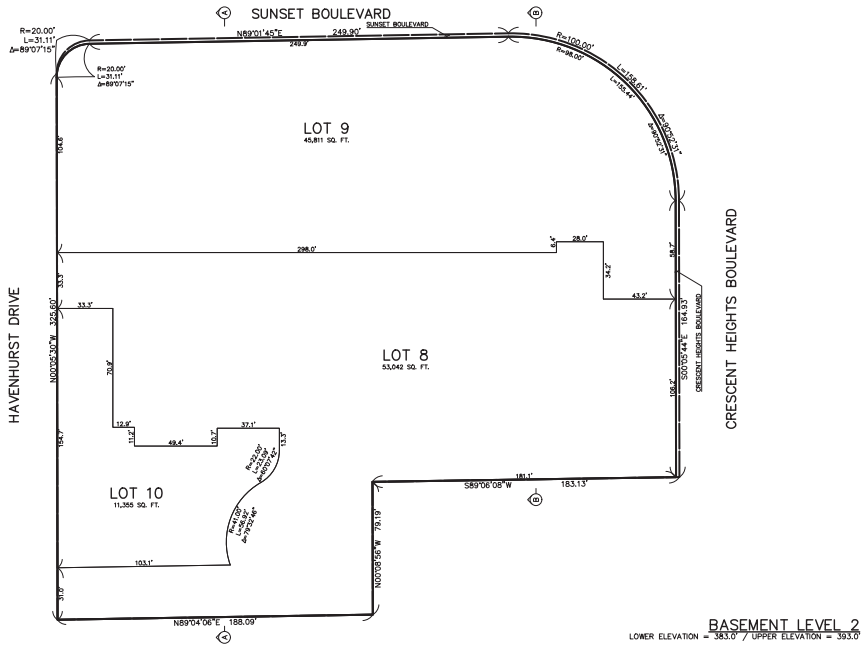
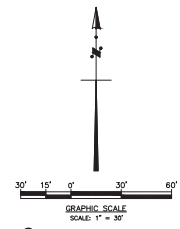
SEPTEMBER 4, 2013	2
1" = 20'	7
11T060301	



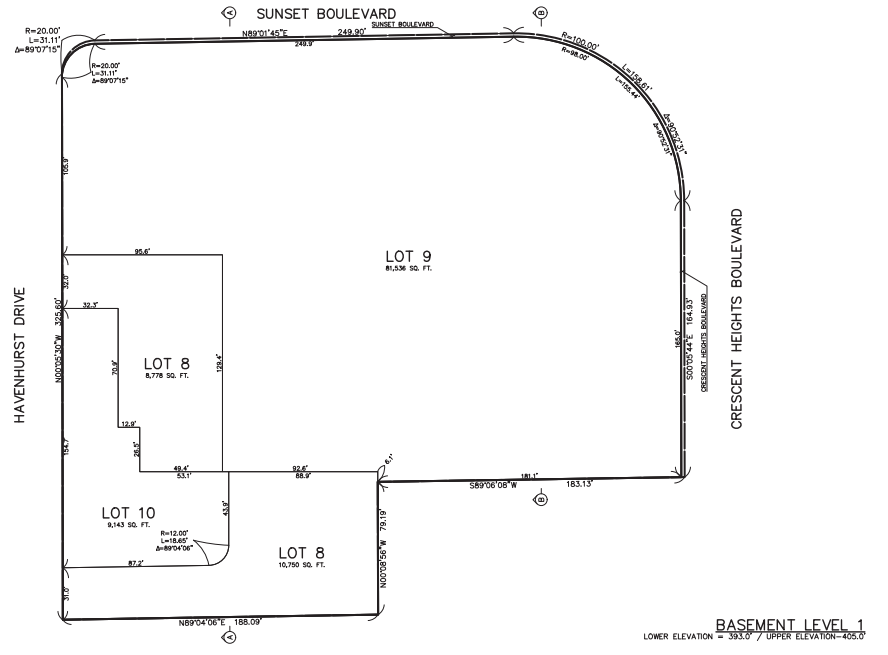
MASTER LOT
BELOW ELEVATION = 377.5' / ABOVE ELEVATION = 599.0'



BASEMENT LEVEL 3/4
LOWER ELEVATION = 350.00' / UPPER ELEVATION = 363.0'



BASEMENT LEVEL 2
LOWER ELEVATION = 383.0' / UPPER ELEVATION = 393.0'



BASEMENT LEVEL 1
LOWER ELEVATION = 393.0' / UPPER ELEVATION = 405.0'



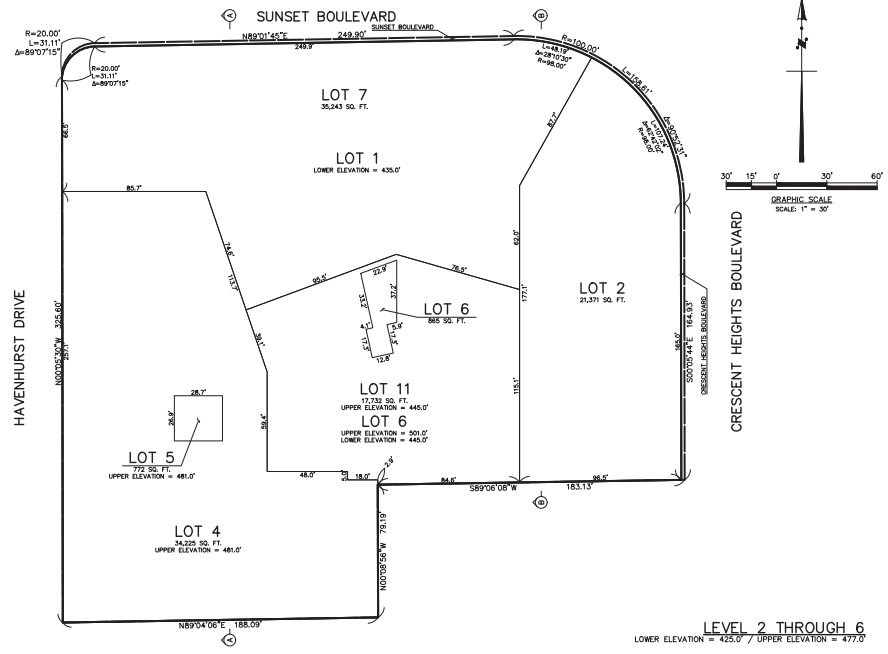
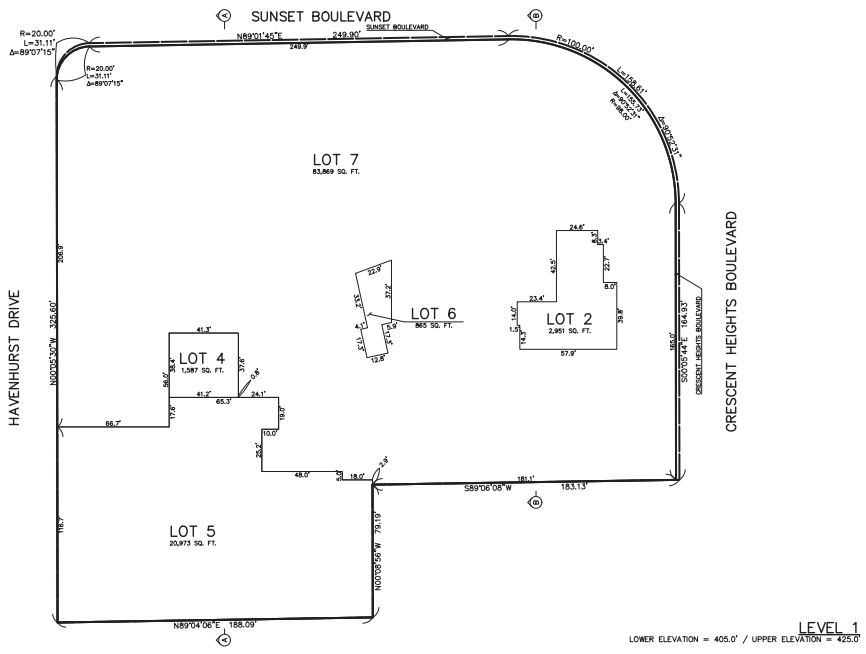
G.R.G.	▲								
G.R.G.	▲								
J.D.C.	▲	4/1/16	REVISED TENTATIVE LOTS	GRS	MAR				

CITY OF LOS ANGELES BENCHMARK NO. 13-16551
L.A. CITY FORM STAMPED "1987 13-16551"
IN NE CORNER CB, N/O SUNSET BLVD., 27 FT.
W/O HAVENHURST DR W. P/L PRODUCED
PERMANENT 403.648 FEET 2000 ADJ. (NAVD88)

PSOMAS
555 South Flower Street, Suite 4300
Los Angeles, CA 90071
(213) 223-1400 (213) 223-1444 fax
www.psomas.com

VESTING TENTATIVE TRACT MAP FOR SUBDIVISION AND CONDOMINIUM PURPOSES:
VESTING TENTATIVE TRACT NO. 72370
8150 SUNSET BOULEVARD
IN THE CITY OF LOS ANGELES COUNTY OF LOS ANGELES STATE OF CALIFORNIA

SEPTEMBER 4, 2013
1" = 30'
1170060301
4
7
REF: 1170060100



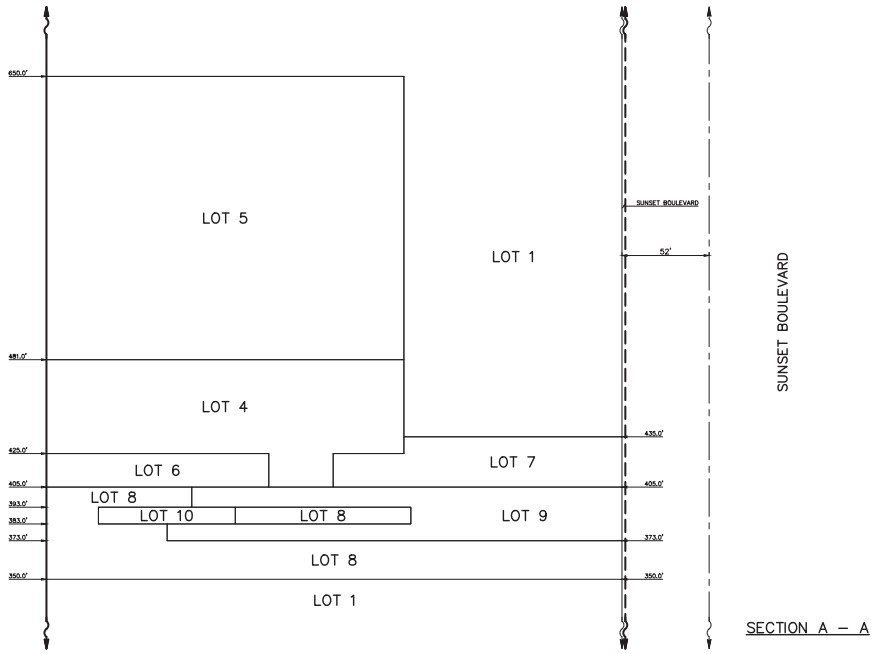
	G.R.G.	▲							
	G.R.G.	▲							
	J.D.C.	▲							

CITY OF LOS ANGELES BENCHMARK NO. 13-16551
 L.A. CITY PGM STAMPED "1987 13-16551"
 IN NE CORNER CB, N/O SUNSET BLVD., 27 FT.
 W/O HAVENHURST DR W. P/L PRODUCED
 403,648 FEET 2000 ADJ. (NAVDS8)

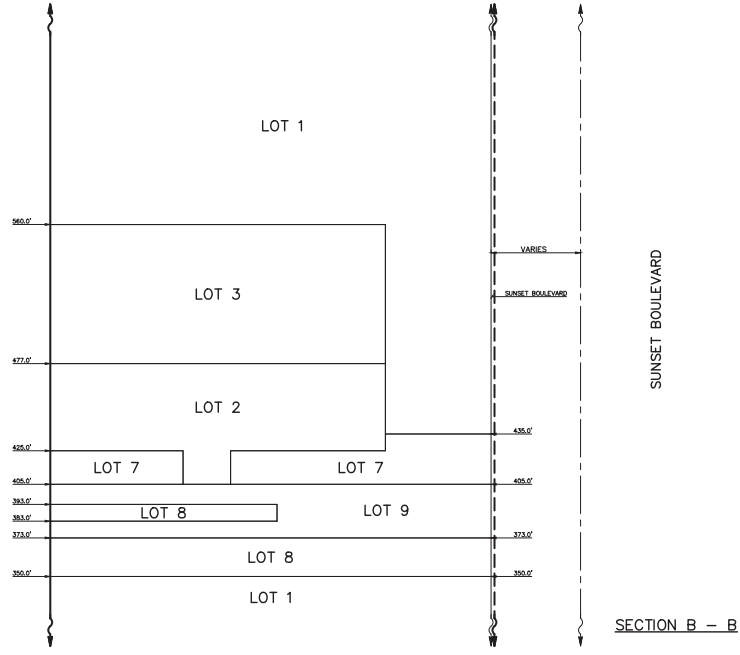
PSOMAS
 555 South Flower Street, Suite 4300
 Los Angeles, CA 90071
 (213) 223-1400 (213) 223-1444 fax
 www.psomas.com

VESTING TENTATIVE TRACT MAP FOR SUBDIVISION AND CONDOMINIUM PURPOSES:
VESTING TENTATIVE TRACT NO. 72370
 8150 SUNSET BOULEVARD
 IN THE CITY OF LOS ANGELES COUNTY OF LOS ANGELES STATE OF CALIFORNIA

SEPTEMBER 4, 2013
 1" = 30'
 1170W060301
 5
 7
 REF: 1170W060100



SECTION A - A



SECTION B - B



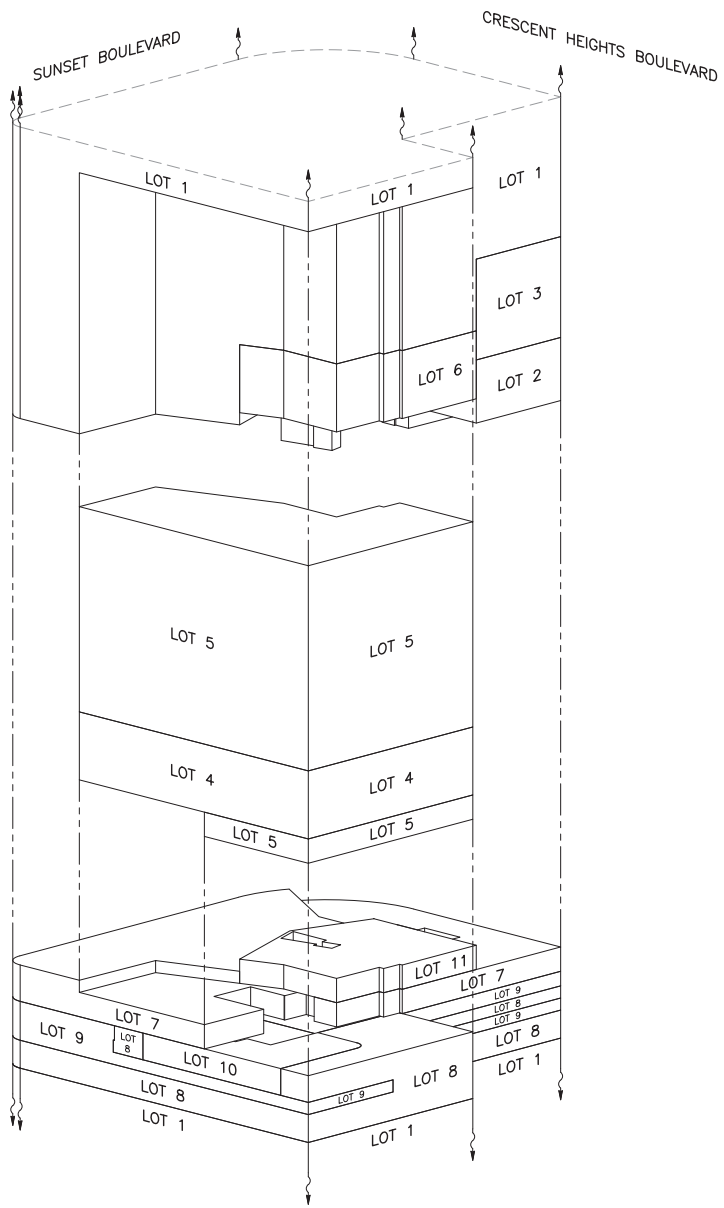
G.R.G.	▲						
G.R.G.	▲						
J.D.C.	▲	4/1/16	REVISED TENTATIVE LOTS	GRG	MJR		

CITY OF LOS ANGELES BENCHMARK NO. 13-16551
 L.A. CITY PGM STAMPED "1987 13-16551"
 IN NE CORNER CB, N/O SUNSET BLVD., 27 FT.
 W/O HAVENHURST DR W. P/L PRODUCED
 403,648 FEET
 2000 ADJ. (NAVDR8)

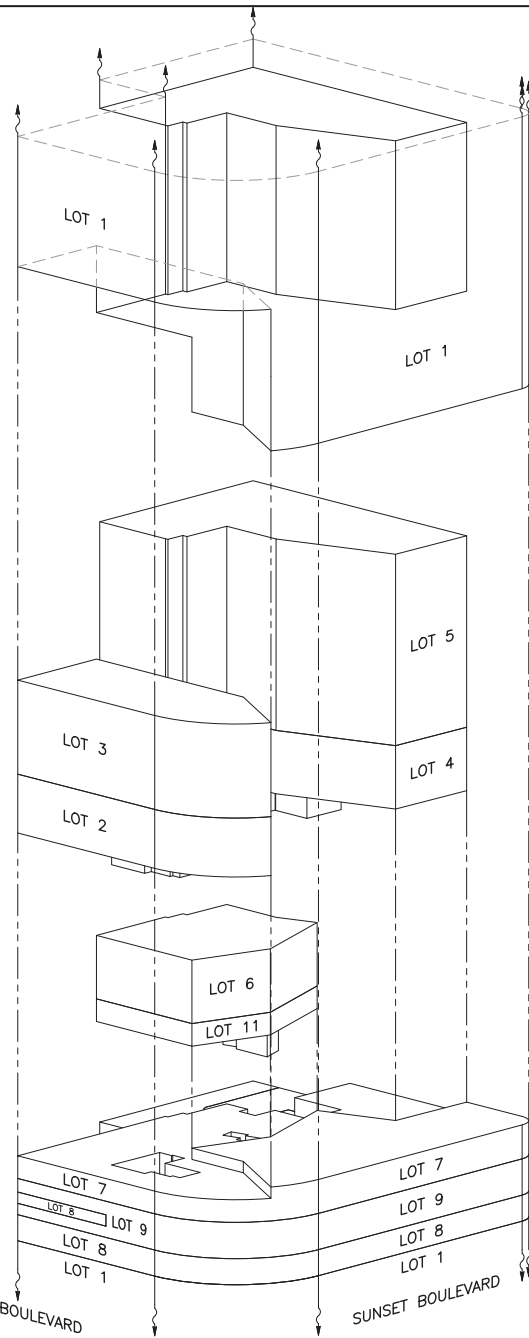


VESTING TENTATIVE TRACT MAP FOR SUBDIVISION AND CONDOMINIUM PURPOSES:
VESTING TENTATIVE TRACT NO. 72370
 8150 SUNSET BOULEVARD
 IN THE CITY OF LOS ANGELES COUNTY OF LOS ANGELES STATE OF CALIFORNIA

SEPTEMBER 4, 2013
 1" = 30'
 11T0W060301
 6
 7
 REF: 11T0W060100



SOUTHWEST ISOMETRIC



NORTHEAST ISOMETRIC



G.R.G.	▲								
G.R.G.	▲								
J.D.C.	▲	4/1/16	REVISED TENTATIVE LOTS	GRS	MJR				

CITY OF LOS ANGELES BENCHMARK NO. 13-16551
 L.A. CITY FORM STAMPED "1987 13-16551"
 IN NE CORNER CB, N/O SUNSET BLVD., 27 FT.
 W/O HAVENHURST DR W. P/L PRODUCED
 403,648 FEET
 2000 ADJ. (NAVDR8)



VESTING TENTATIVE TRACT MAP FOR SUBDIVISION AND CONDOMINIUM PURPOSES:
VESTING TENTATIVE TRACT NO. 72370
 8150 SUNSET BOULEVARD
 IN THE CITY OF LOS ANGELES COUNTY OF LOS ANGELES STATE OF CALIFORNIA

SEPTEMBER 4, 2013
 1" = 30'
 1170W060301
 7
 7
 REF: 1170W060100