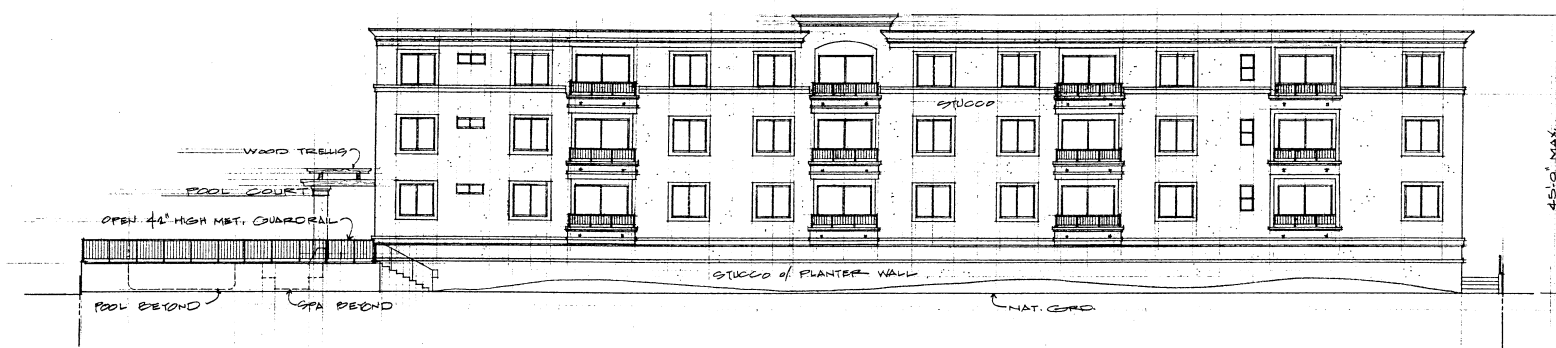
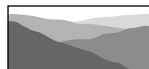


EAST ELEVATION
SCALE: 1/8"=1'-0"



NORTH ELEVATION
SCALE: 1/8"=1'-0"

Source: Clark and Hedrick, Architecture and Planning Engineering, April, 2004.



CHRISTOPHER A. JOSEPH & ASSOCIATES
Environmental Planning and Research

Figure III-4
North and East Elevations