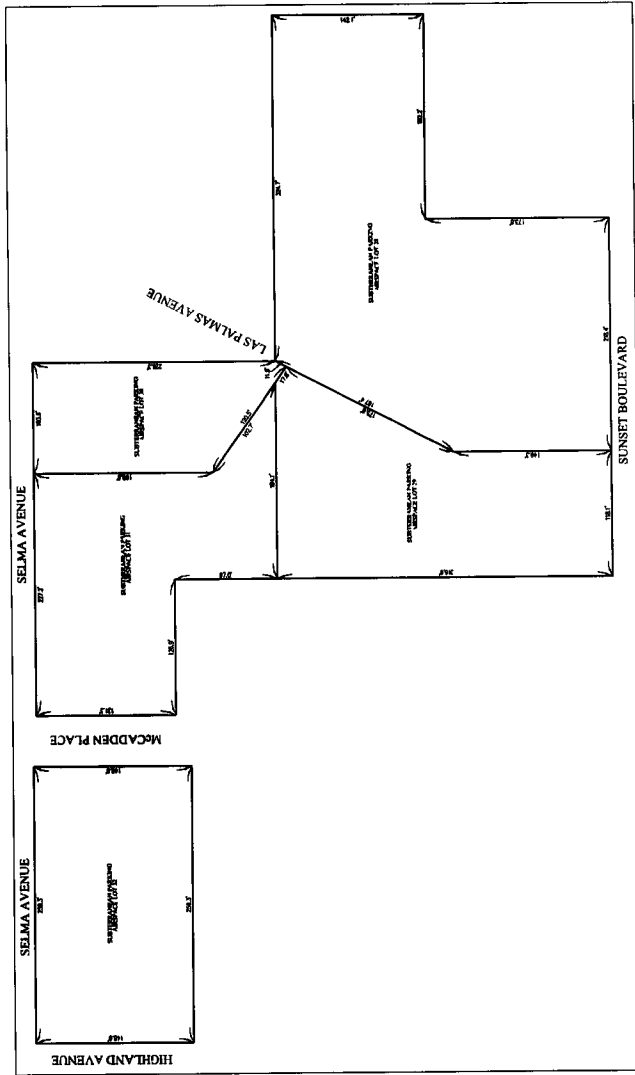
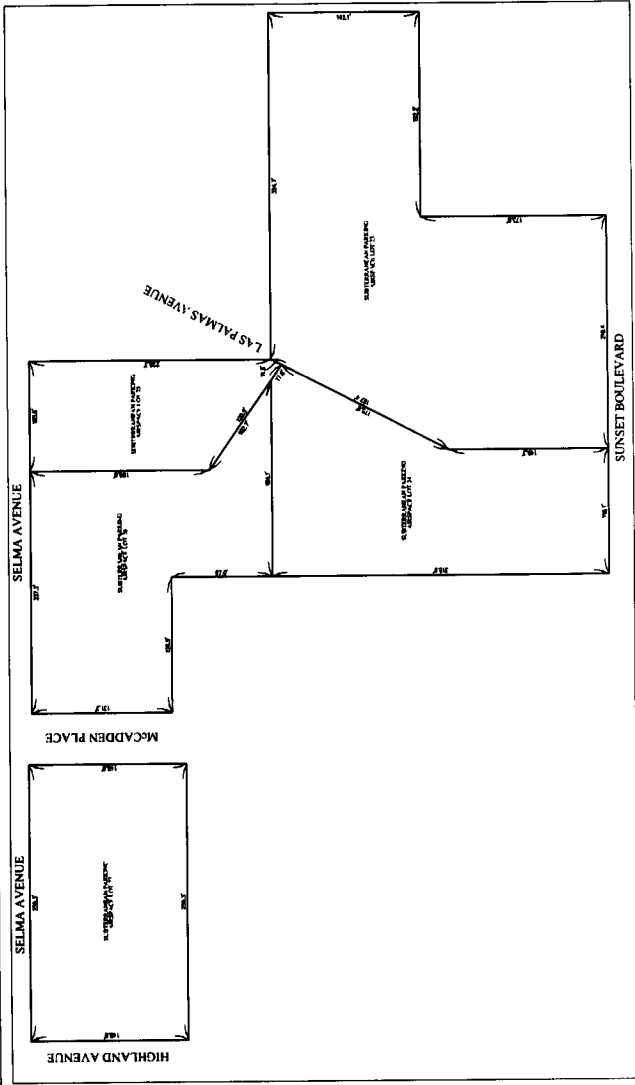


VESTING TENTATIVE AIRSPACE TRACT MAP NO. 73568
 MERGER & RESUBDIVISION FOR 5 GROUND LOTS AND 41 AIRSPACE LOTS, 190 RESIDENTIAL CONDOMINIUM UNITS, 760 RESIDENTIAL APARTMENTS, 185,000 SQUARE FEET OF RETAIL & RESTAURANT/95,000 SQUARE FEET OF OFFICE SPACE (135 COMMERCIAL CONDOMINIUMS), 308 HOTEL ROOMS
 STREET VACATION & REALIGNMENT OF LAS PALMAS AVENUE
 PHASED UNIT MAP RECORDED IN UP TO 5 SEPARATE PHASES



LEVEL P3
AIRSPACE LOTS 28-32



LEVEL P2
AIRSPACE LOTS 23-27



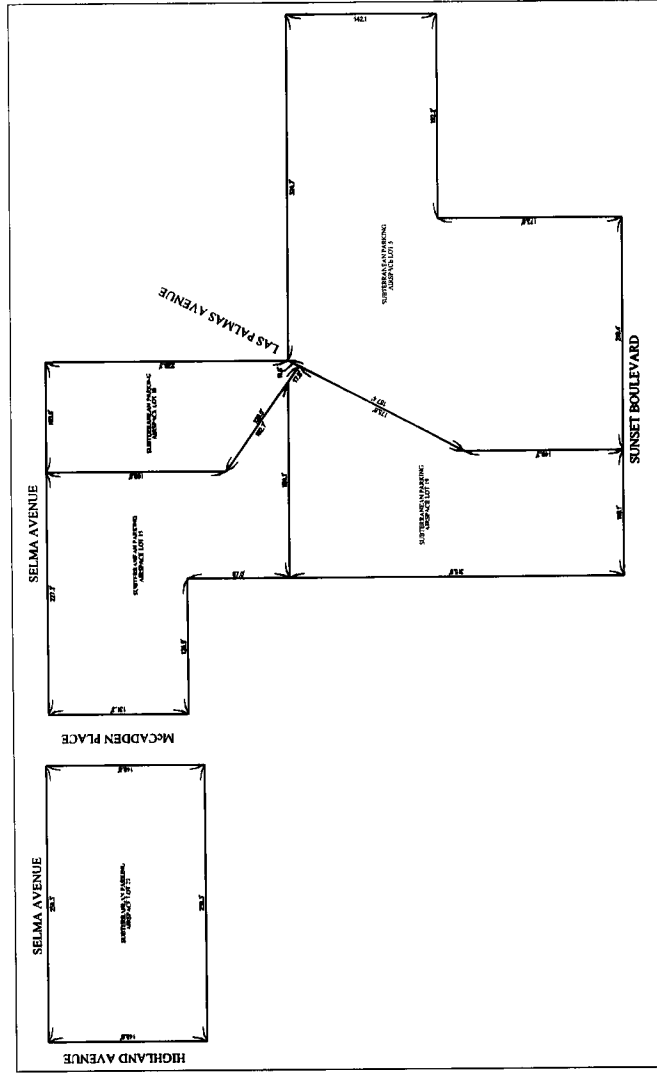
DIGITAL
 THE SOURCE FOR THE BEST IN DIGITAL SURVEYING SOFTWARE
 10000 W. CENTURY BLVD., SUITE 1000, LOS ANGELES, CA 90048
 TEL: 310.441.1111 FAX: 310.441.1112
 WWW.DIGITALSURVEYING.COM

Hall & Foreman, Inc.
 Engineering - Planning - Surveying
 1100 W. CENTURY BLVD., SUITE 1000, LOS ANGELES, CA 90048
 TEL: 310.441.1111 FAX: 310.441.1112
 WWW.HALLANDFOREMAN.COM

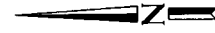
CITY OF LOS ANGELES
 CROSSROADS
 MAP NO. 73568
 PREPARED BY: [Name]
 DATE: [Date]
 SCALE: [Scale]
 SHEET NO. 1 OF 1

VESTING TENTATIVE AIRSPACE TRACT MAP NO. 73568

MERGER & RESUBDIVISION FOR 5 GROUND LOTS AND 41 AIRSPACE LOTS, 190 RESIDENTIAL CONDOMINIUM UNITS, 760 RESIDENTIAL APARTMENTS, 185,000 SQUARE FEET OF RETAIL & RESTAURANT/95,000 SQUARE FEET OF OFFICE SPACE, (135 COMMERCIAL CONDOMINIUMS), 308 HOTEL ROOMS STREET VACATION & REALIGNMENT OF LAS PALMAS AVENUE PHASED UNIT MAP RECORDED IN UP TO 5 SEPARATE PHASES

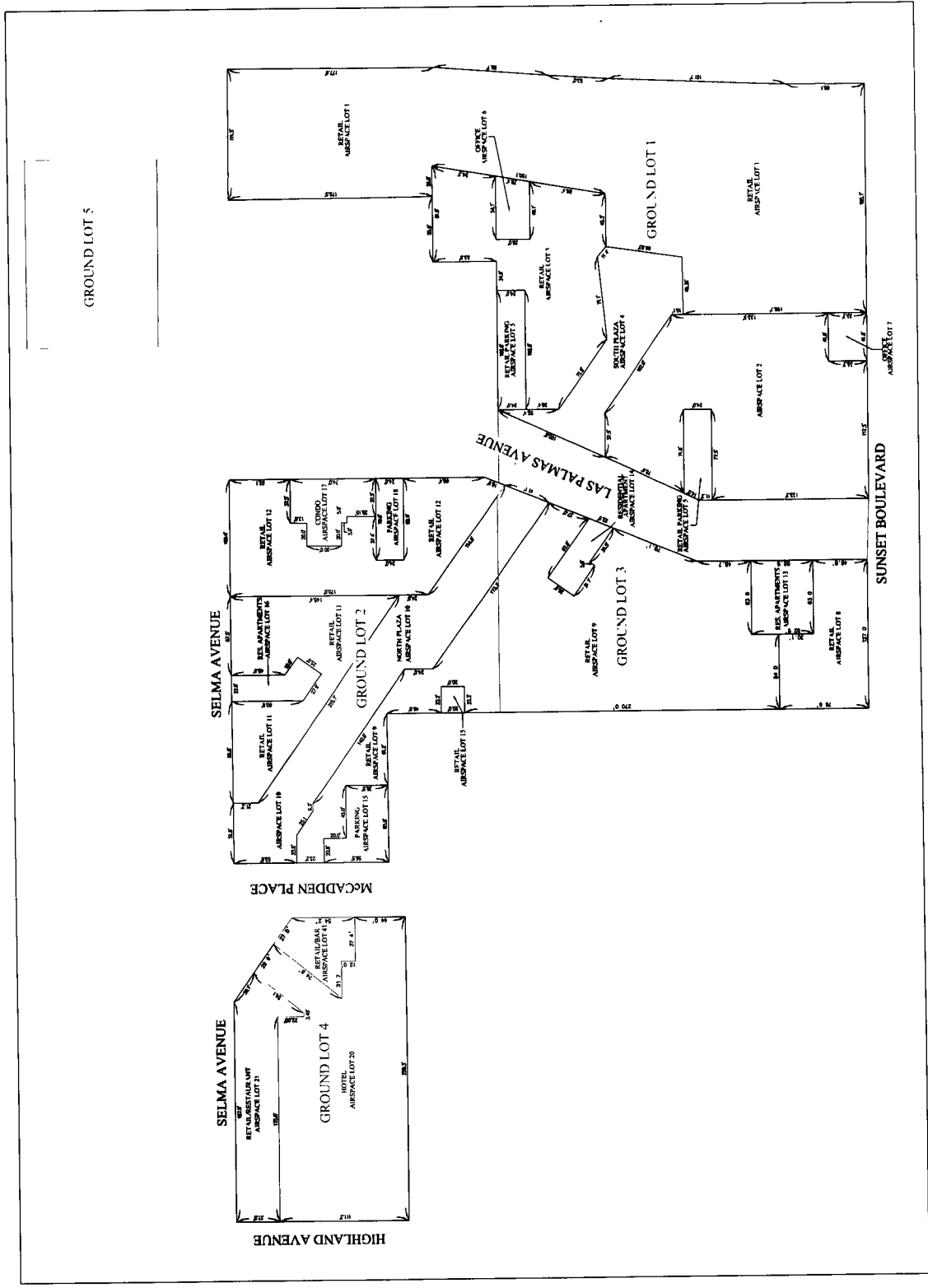


LEVEL P1
AIRSPACE LOTS 5, 15, 18, 19, & 22



| | | | |
|--|-----------------------|--|--|
| | | | |
| CITY OF LOS ANGELES CROSSROADS | | Engineering • Planning • Surveying 1700 WEST WASHINGTON AVENUE SUITE 200 LOS ANGELES, CALIFORNIA 90017-1715 PHONE: (213) 487-1111 FAX: (213) 487-1112 | |
| DATE: 08/27/15 TIME: 10:00 AM DRAWN BY: [Name] CHECKED BY: [Name] | SHEET NO. 01 OF 01 | A DIVISION OF DAVID EVANS AND ASSOCIATES, INC. | |

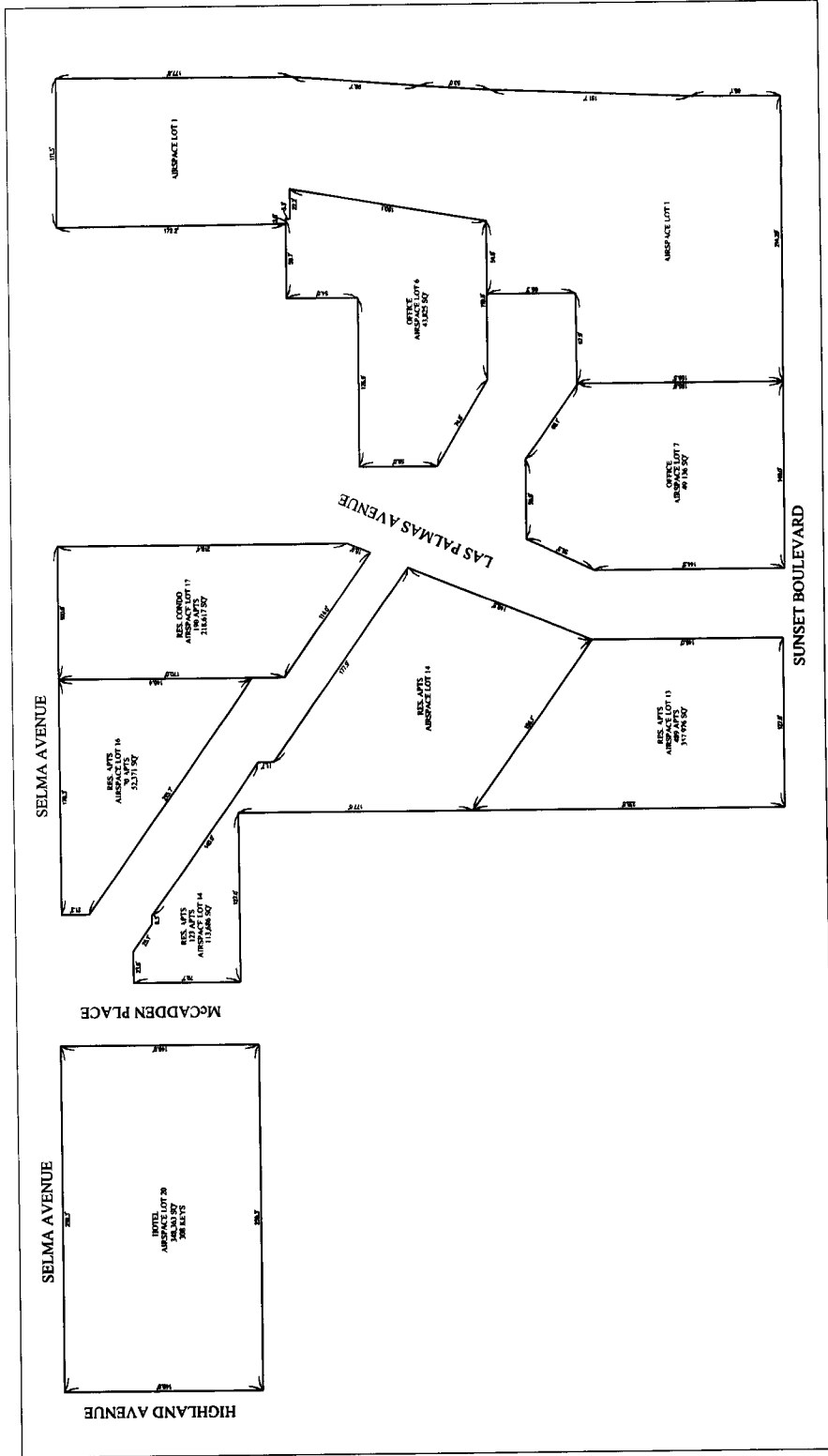
VESTING TENTATIVE AIRSPACE TRACT MAP NO. 73568
 MERGER & RESUBDIVISION FOR 5 GROUND LOTS AND 41 AIRSPACE LOTS, 190 RESIDENTIAL CONDOMINIUM UNITS, 760 RESIDENTIAL APARTMENTS, 185,000 SQUARE FEET OF RETAIL & RESTAURANT/ OFFICE SPACE, (135 COMMERCIAL CONDOMINIUMS), 308 HOTEL ROOMS
 STREET VACATION & REALIGNMENT OF LAS PALMAS AVENUE
 PHASED UNIT MAP RECORDED IN UP TO 5 SEPARATE PHASES



GROUND LEVEL
 AIRSPACE LOTS 1-18, 20, 21, & 41-43

| | | | |
|--|-----------------------------------|--|--|
| | | Hall & Foreman, Inc. Engineering - Planning - Surveying 1000 WEST 10TH STREET, SUITE 200 LOS ANGELES, CALIFORNIA 90015 PHONE (213) 487-1111 FAX (213) 487-1112 | |
| PROJECT NO. 73568 SHEET NO. 01 DATE 05/15/01 | CITY OF LOS ANGELES CROSSROADS | PREPARED BY: [Name] CHECKED BY: [Name] DATE: [Date] | A DIVISION OF DAVID EVANS AND ASSOCIATES INC. 1000 WEST 10TH STREET, SUITE 200 LOS ANGELES, CALIFORNIA 90015 PHONE (213) 487-1111 FAX (213) 487-1112 |

VESTING TENTATIVE AIRSPACE TRACT MAP NO. 73568
 MERGER & RESUBDIVISION FOR 5 GROUND LOTS AND 41 AIRSPACE LOTS, 190 RESIDENTIAL CONDOMINIUM UNITS, 760 RESIDENTIAL APARTMENTS, 185,000 SQUARE FEET OF RETAIL & RESTAURANT/95,000 SQUARE FEET OF OFFICE SPACE, (135 COMMERCIAL CONDOMINIUMS), 308 HOTEL ROOMS
 STREET VACATION & REALIGNMENT OF LAS PALMAS AVENUE
 PHASED UNIT MAP RECORDED IN UP TO 5 SEPARATE PHASES



PODIUM LEVELS
 AIRSPACE LOTS 1, 6-7, 13-14, 16-17, & 20



CITY OF LOS ANGELES
CROSSROADS

Hall & Foreman, Inc.
 Engineering - Planning - Surveying
 1750 W. PULVER STREET, SUITE 200, LOS ANGELES, CA 90024
 (213) 480-1111

A DIVISION OF HALL, FOREMAN & ASSOCIATES, P.A.C.

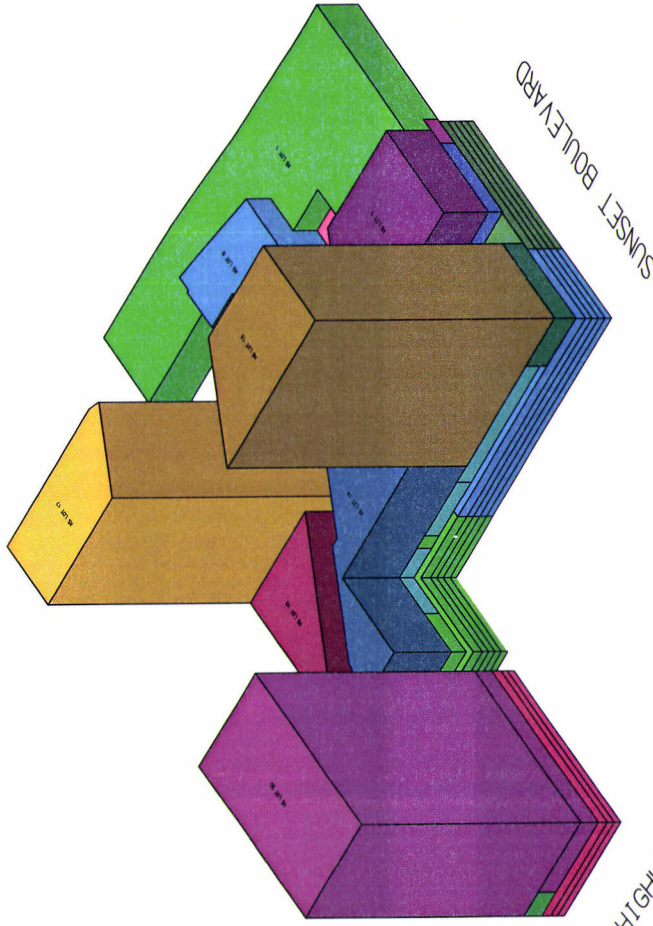
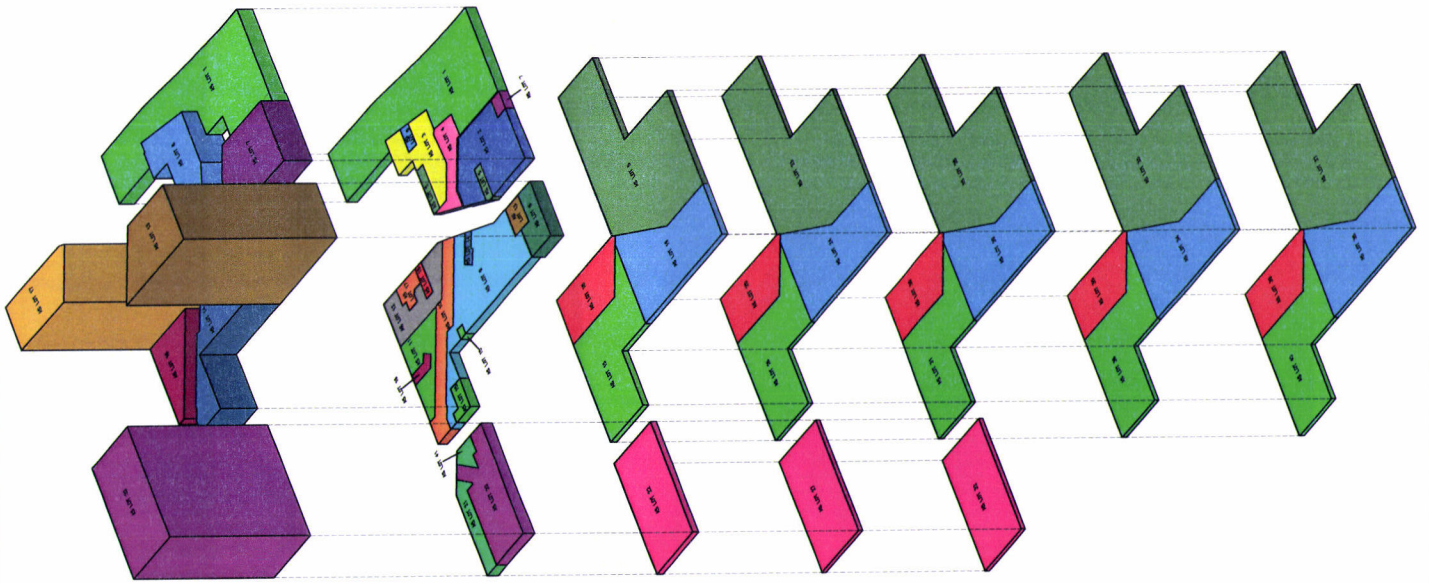
| | |
|-------------|----------|
| PROJECT NO. | 73568 |
| DATE | 06/07/13 |
| SCALE | AS SHOWN |
| BY | WJ |
| CHECKED BY | WJ |
| DATE | 06/07/13 |
| APPROVED BY | WJ |
| DATE | 06/07/13 |

DIGITAL
 THE CITY OF LOS ANGELES
 PUBLIC WORKS DEPARTMENT
 1200 N. GARDEN STREET, 2ND FLOOR
 LOS ANGELES, CA 90012

VESTING TENTATIVE AIRSPACE TRACT MAP NO. 73568

MERGER & RESUBDIVISION FOR 5 GROUND LOTS AND 41 AIRSPACE LOTS, 190 RESIDENTIAL CONDOMINIUM UNITS, 760 RESIDENTIAL APARTMENTS, 185,000 SQUARE FEET OF RETAIL & RESTAURANT/ 95,000 SQUARE FEET OF OFFICE SPACE, (135 COMMERCIAL CONDOMINIUMS), 308 HOTEL ROOMS STREET VACATION & REALIGNMENT OF LAS PALMAS AVENUE PHASED UNIT MAP RECORDED IN LIP TO 5 SEPARATE PHASES

SOUTHWEST ISOMETRIC VIEW



HIGHLAND AVENUE

SUNSET BOULEVARD

- LEGEND**
- [Green Box] = RETAIL AIRSPACE LOT 1
 - [Blue Box] = RETAIL AIRSPACE LOT 2
 - [Yellow Box] = RETAIL AIRSPACE LOT 3
 - [Pink Box] = RETAIL AIRSPACE LOT 4
 - [Light Green Box] = RETAIL PARKING AIRSPACE LOT 5
 - [Light Blue Box] = OFFICE AIRSPACE LOT 6
 - [Purple Box] = OFFICE AIRSPACE LOT 7
 - [Light Green Box] = RETAIL AIRSPACE LOT 8
 - [Light Blue Box] = RETAIL AIRSPACE LOT 9
 - [Orange Box] = RETAIL AIRSPACE LOT 10
 - [Dark Blue Box] = RETAIL AIRSPACE LOT 11
 - [Grey Box] = RETAIL AIRSPACE LOT 12
 - [Yellow Box] = RESIDENTIAL APARTMENT AIRSPACE LOT 13
 - [Blue Box] = RESIDENTIAL APARTMENT AIRSPACE LOT 14
 - [Light Green Box] = PARKING AIRSPACE LOT 15
 - [Light Blue Box] = RESIDENTIAL APARTMENT AIRSPACE LOT 16
 - [Yellow Box] = CONDOMINIUM AIRSPACE LOT 17
 - [Light Green Box] = PARKING AIRSPACE LOT 18
 - [Light Blue Box] = PARKING AIRSPACE LOT 19
 - [Purple Box] = HOTEL AIRSPACE LOT 20
 - [Light Green Box] = RETAIL AIRSPACE LOT 21
 - [Pink Box] = PARKING AIRSPACE LOT 22
 - [Light Green Box] = PARKING AIRSPACE LOT 23
 - [Blue Box] = PARKING AIRSPACE LOT 24
 - [Light Green Box] = PARKING AIRSPACE LOT 25
 - [Light Blue Box] = PARKING AIRSPACE LOT 26
 - [Yellow Box] = PARKING AIRSPACE LOT 27
 - [Light Green Box] = PARKING AIRSPACE LOT 28
 - [Light Blue Box] = PARKING AIRSPACE LOT 29
 - [Purple Box] = PARKING AIRSPACE LOT 30
 - [Light Green Box] = PARKING AIRSPACE LOT 31
 - [Pink Box] = PARKING AIRSPACE LOT 32
 - [Light Green Box] = PARKING AIRSPACE LOT 33
 - [Blue Box] = PARKING AIRSPACE LOT 34
 - [Light Green Box] = PARKING AIRSPACE LOT 35
 - [Light Blue Box] = PARKING AIRSPACE LOT 36
 - [Yellow Box] = PARKING AIRSPACE LOT 37
 - [Light Green Box] = PARKING AIRSPACE LOT 38
 - [Light Blue Box] = PARKING AIRSPACE LOT 39
 - [Purple Box] = PARKING AIRSPACE LOT 40
 - [Light Green Box] = PARKING AIRSPACE LOT 41

NOTE: 3D VIEW OF VERTICAL PARCELS IS FOR PRESENTATION PURPOSES ONLY.



Hall & Foreman, Inc.
 Engineering - Planning - Surveying
 1000 WEST 10TH STREET, SUITE 200, LOS ANGELES, CA 90015
 PHONE: (213) 481-1111 FAX: (213) 481-1112

CITY OF LOS ANGELES
 CROSSROADS
 LOT TO SCALE
 DATE: 05/27/03
 SHEET NO. 01 OF 01

SOUTHWEST ISOMETRIC VIEW