



CITY OF LOS ANGELES
DEPARTMENT OF CITY PLANNING
CITY HALL 200 NORTH SPRING STREET LOS ANGELES CA 90012

INITIAL STUDY

1100 E. 5th Street Project Appendix

Case Number: ENV-2016-3727-EIR

Project Location: 1100 E. 5th Street, 506-530 S. Seaton Street (southeast corner of E. 5th and Seaton Streets), Los Angeles, California, 90013

Community Plan Area: Central City North

Council District: 14—Huizar

Project Description: The Project proposes the demolition of three vacant warehouse buildings and surface parking, and the construction of an up to 247,000-square-foot mixed-use building containing up to 220 live/work units and approximately 22,725 square feet of open space for residents, up to 44,530 square feet of commercial uses, and associated parking facilities providing approximately 342 parking spaces and approximately 288 bicycle parking spaces at the 54,009-square-foot (1.2-acre) Project site. Eleven percent of the units (approximately 25 live/work units) would be deed-restricted for Very Low Income households. The proposed building would be up to 110 feet (8 levels) tall and would include a three-level subterranean parking structure.

PREPARED FOR:

The City of Los Angeles
Department of City Planning

PREPARED BY:

EcoTierra Consulting, Inc.

APPLICANT:

WW-5th & Seaton, LLC, and XF-5th & Seaton, LLC

February 2018

Appendix A



Class One Arboriculture Inc.
2823 Manhattan Av
La Crescenta, CA 91214
(818) 495-5344

September 14, 2016

Lydia Kenselaar
Design Workshop
724 South Spring Street, Suite 701
Los Angeles, CA 90014

Ms. Kenselaar:

I am writing this report to document my site inspection of 1100 E 5th St in Los Angeles, CA 90021 I observed the site on September 14, and I saw **there are no protected trees.**

1100 E 5th St has several trees growing in a planter to the east of the main structure. Four of these trees are Queen Palm (*Syagrus romanzoffiana*), and one is an Avocado (*Persea americana*). Along the border of the property to the east are several trees growing on the neighboring property. They include Purple Leaf Plum (*Prunus cerasifera*), and Cape Myrtle (*Lagerstroemia indica*). None of these trees are protected species by the City of Los Angeles tree protection ordinance.

If you have further questions, feel free to give me a call or email.

James Komen
Board Certified Master Arborist #WE-9909B
Registered Consulting Arborist #555
Class One Arboriculture Inc.
818-495-5344

Site Map

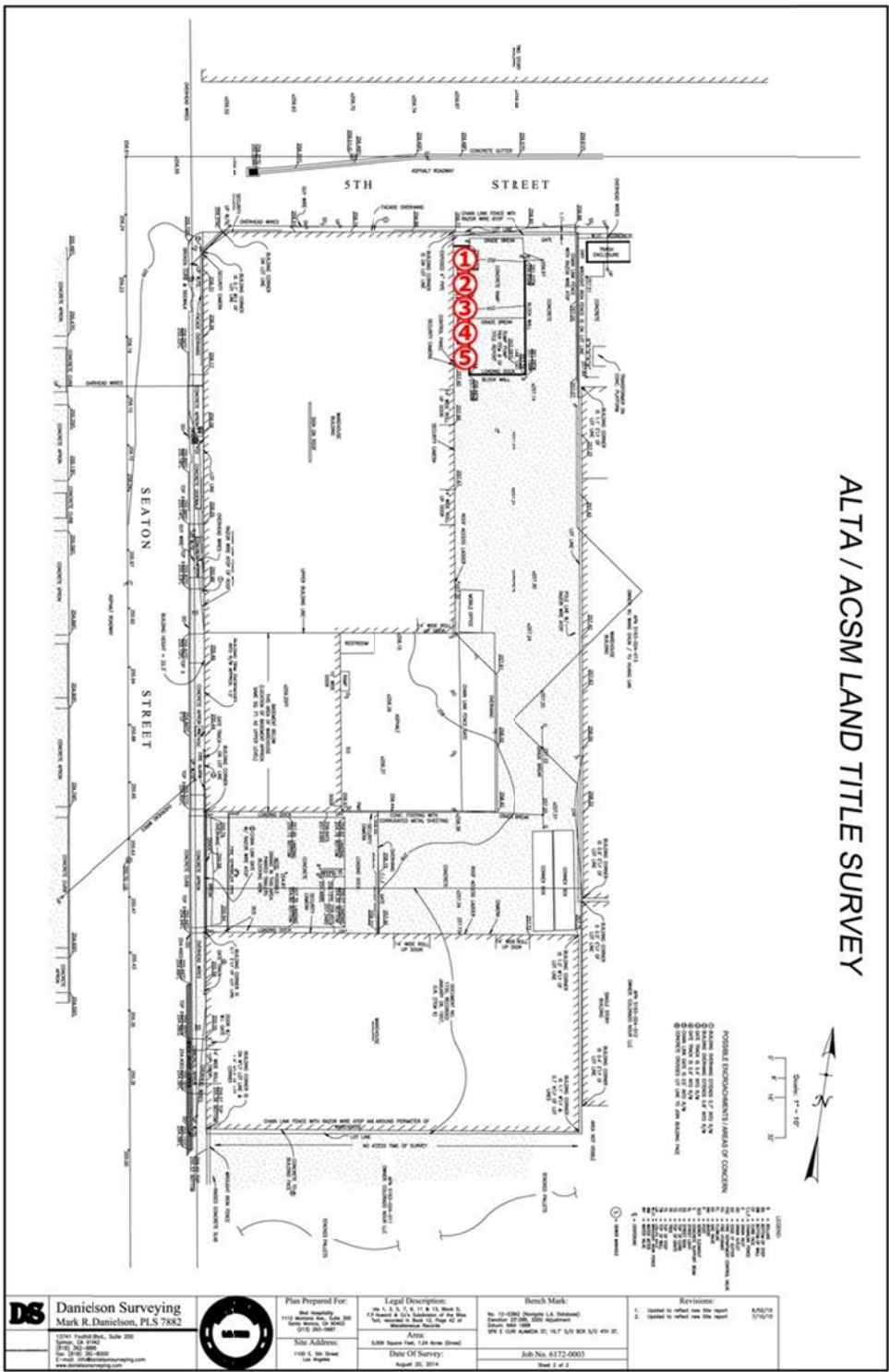


Figure 1: Site map of the trees at 1100 E 5th St. None of the surveyed trees are protected species.

Site Photos



Figure 2: Four queen palms (Trees 1-4) on the east side of 1100 E 5th St.



Figure 3: Avocado (Tree 5) on the east side of 1100 E 5th St.



Figure 4: Trees growing on eastern side of property line at 1100 E 5th St including Purple Leaf Plum and Crape Myrtle.