

Attachment C
Carlberg Associates
Horticulturists and Registered Consulting Arborists
Report



March 28, 2015

Kevin Zhang
Rockport Development, Inc.
1654 El Camino Street
Pomona, CA 91768

Re: 1209 Sixth Avenue, Los Angeles, California

Dear Mr. Zhang,

This letter addresses our office's site visit of March 26, 2015 to the above-named property. We were retained to visit the site and determine if any trees considered protected by the City of Los Angeles Tree Preservation Ordinance No. 177,044 were present. There is one Brazilian pepper adjacent to the south property line, but no California native tree species. ***None of the private property tree species are considered protected by the ordinance.***

There are four public rights-of-way trees (*Jacaranda mimosifolia*) associated with the property. They should be fenced according to City of Los Angeles public tree protection guidelines prior to demolition. Tree C-4 is poorly developed and misshapen; it would ideally be removed and replaced. There do not appear to be any off-site trees on the neighboring property to the south that are directly affected by demolition or construction.

Respectfully submitted,

Cy Carlberg, Registered Consulting Arborist

Santa Monica Office

cy@cy Carlberg.com

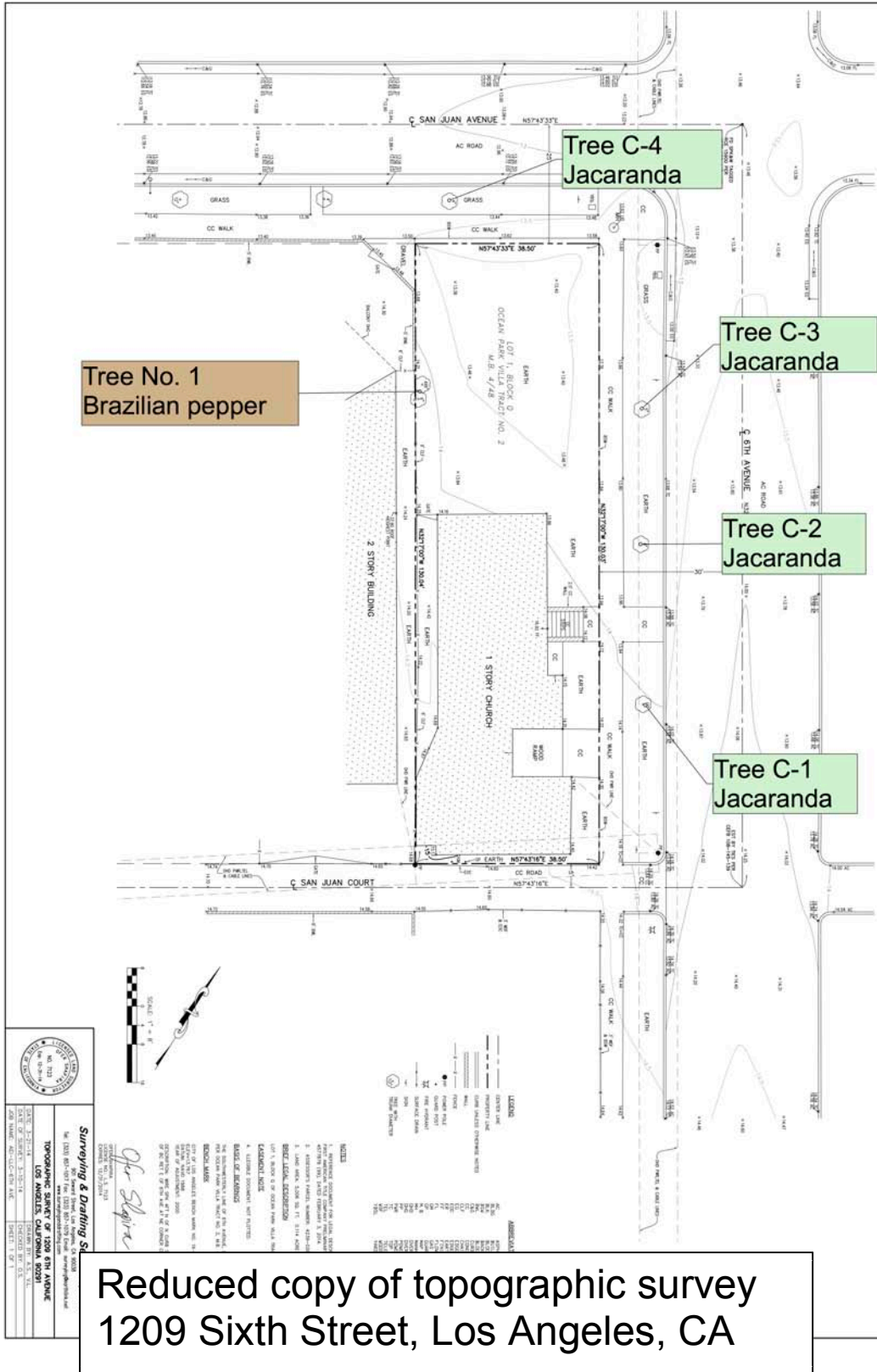
Santa Monica Office
2402 California Avenue
Santa Monica, California 90403
Office: 310.453.TREE (8733)

Sierra Madre Office
80 West Sierra Madre Boulevard, #241
Sierra Madre, California 91024
Office: 626.248.8977

www.cy Carlberg.com

Tree Inventory

Tree #	Common Name	Botanical Name	Diameter at 4.5 feet (dbh) In inches	Height (in feet)	Canopy Spread (in diameter feet)	Physiological Condition (A-F)	Structural Condition (A-F)	Protected Tree?
1	Brazilian pepper	<i>Schinus terebinthifolius</i>	3, 4, 4, 5, 5.5, 6	25	25	A	A	No
City of Los Angeles Right-of-Way Trees								
Tree ID	Common Name	Botanical Name	Diameter at 4.5 feet (dbh) In inches	Height (in feet)	Canopy Spread (in diameter feet)	Overall Condition	Comments	
C-1	Jacaranda	<i>Jacaranda mimosifolia</i>	9	18	20	A-	Protect	
C-2	Jacaranda	<i>Jacaranda mimosifolia</i>	7.2	16	22	A-	Protect	
C-3	Jacaranda	<i>Jacaranda mimosifolia</i>	4.5	12	12	B	Protect	
C-4	Jacaranda	<i>Jacaranda mimosifolia</i>	2.8	8	8	C-	Protect	



CY CARLBERG

CARLBERG ASSOCIATES

2402 California Avenue, Santa Monica, California 90403
(310) 453-TREE
cy@cycarlberg.com

- Education B.S., Landscape Architecture, California State Polytechnic University, Pomona, 1985
Graduate, Arboricultural Consulting Academy, American Society of Consulting Arborists, Chicago, Illinois, February 2002
Graduate, Municipal Forestry Institute, Lied, Nebraska, 2012
- Experience Consulting Arborist, Carlberg Associates, 1998-present
Manager of Grounds Services, California Institute of Technology, Pasadena, 1992-1998
Director of Grounds, Scripps College, Claremont, 1988-1992
- Certificates Certified Arborist (#WE-0575A), International Society of Arboriculture, 1990
Registered Consulting Arborist (#405), American Society of Consulting Arborists, 2002
Certified Urban Forester (#013), California Urban Forests Council, 2004
Certified Tree Risk Assessor (#1028), International Society of Arboriculture, 2011

AREAS OF EXPERTISE

Ms. Carlberg is experienced in the following areas of tree management and preservation:

- Tree health and risk assessment
- Master Planning
- Tree inventories and reports to satisfy jurisdictional requirements
- Expert Testimony
- Post-fire assessment, valuation, and mitigation for trees and native plant communities
- Value assessments for native and non-native trees
- Pest and disease identification
- Guidelines for oak preservation
- Selection of appropriate tree species
- Planting, pruning, and maintenance specifications
- Tree and landscape resource mapping – GPS, GIS, and AutoCAD
- Planning Commission, City Council, and community meetings representation

PREVIOUS CONSULTING EXPERIENCE

Ms. Carlberg has overseen residential and commercial construction projects to prevent damage to protected and specimen trees. She has thirty-five years of experience in arboriculture and horticulture and has performed tree health evaluation, value and risk assessment, and expert testimony for private clients, government agencies, cities, school districts, and colleges. Representative clients include:

- | | |
|---|---|
| The Huntington Library and Botanical Gardens | The City of Claremont |
| The Los Angeles Zoo and Botanical Gardens | The City of Beverly Hills |
| The Rose Bowl and Brookside Golf Course, Pasadena | The City of Pasadena |
| Walt Disney Concert Hall and Gardens | The City of Los Angeles |
| The Art Center College of Design, Pasadena | The City of Santa Monica |
| Pepperdine University | Santa Monica/Malibu Unified School District |
| Loyola Marymount University | San Diego Gas & Electric |
| The Claremont Colleges (Pomona, Scripps, CMC, Harvey Mudd, | Los Angeles Department of Water and Power |
| Claremont Graduate University, Pitzer, Claremont University Center) | Rancho Santa Ana Botanic Garden, Claremont |
| Quinn, Emanuel, Urquhart and Sullivan (attorneys at law) | Latham & Watkins, LLP (attorneys at law) |

AFFILIATIONS

Ms. Carlberg serves with the following national, state, and community professional organizations:

- California Urban Forests Council, Board Member, 1995-2006
- Street Tree Seminar, Past President, 2000-present
- American Society of Consulting Arborists Academy, Faculty Member, 2003-2005
- American Society of Consulting Arborists, Board of Directors, 2013-Present
- Member, Los Angeles Oak Woodland Habitat Conservation Strategic Alliance, 2010-present

