

Appendices

Appendix IS-1

Tree Protection Report

August 19, 2016

City of Los Angeles

Re: **Hollywood & Wilcox: Tree Protection Report**
 Los Angeles, California

To Whom It May Concern:

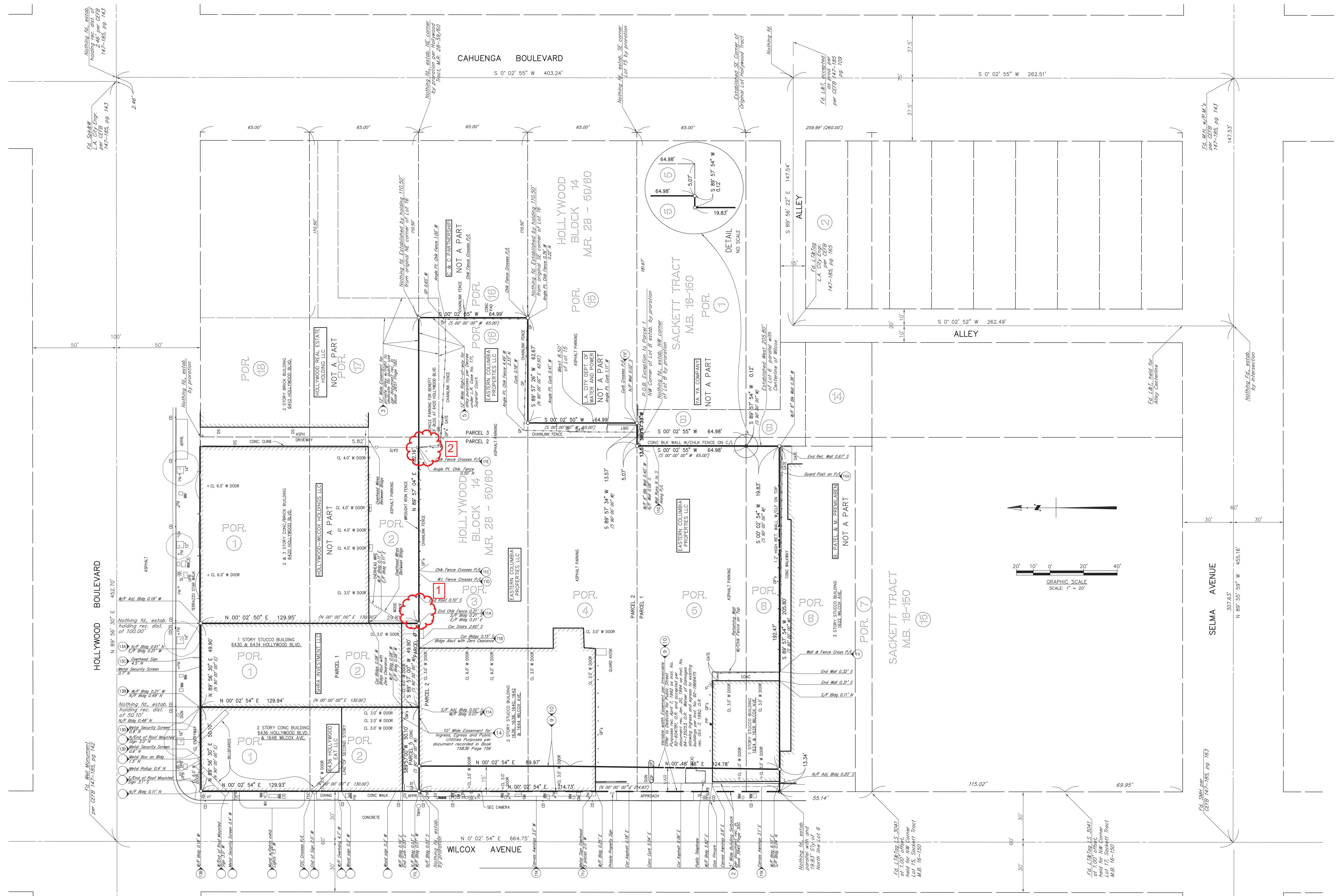
After review of the project site, we determined that there are no protected tree species existing on the site, and that the existing trees may be demolished for construction.

Please see the attached Tree Inventory mapping the locations and further information on the existing trees.

Respectfully yours,



David K. Larkins
 Managing Principal
 DKL: dkl



TREE INVENTORY SITE MAP

TREE INVENTORY	COMMON NAME	BRING/PLANT FRANK	DBH	HT	CANOPY JES	PROTECTED	ACTION	NOTES
CESTRUS SP.	CESTRUS	SINGLE	0"	10'	10'	NO	SEMP	GROWING AT CHAINLINK FENCE, POSSIBLE VOLUNTEER, VIGOROUS WATER-SHEDDING GROW, LARGE THORNS
CUPANOPSIS ANACARDIACEAE	CARROTWOOD	MULTI	0", 2"	12'	15'	NO	SEMP	GROWING AT CHAINLINK FENCE, POSSIBLE VOLUNTEER

TREE INVENTORY

TREE PROTECTION REPORT

