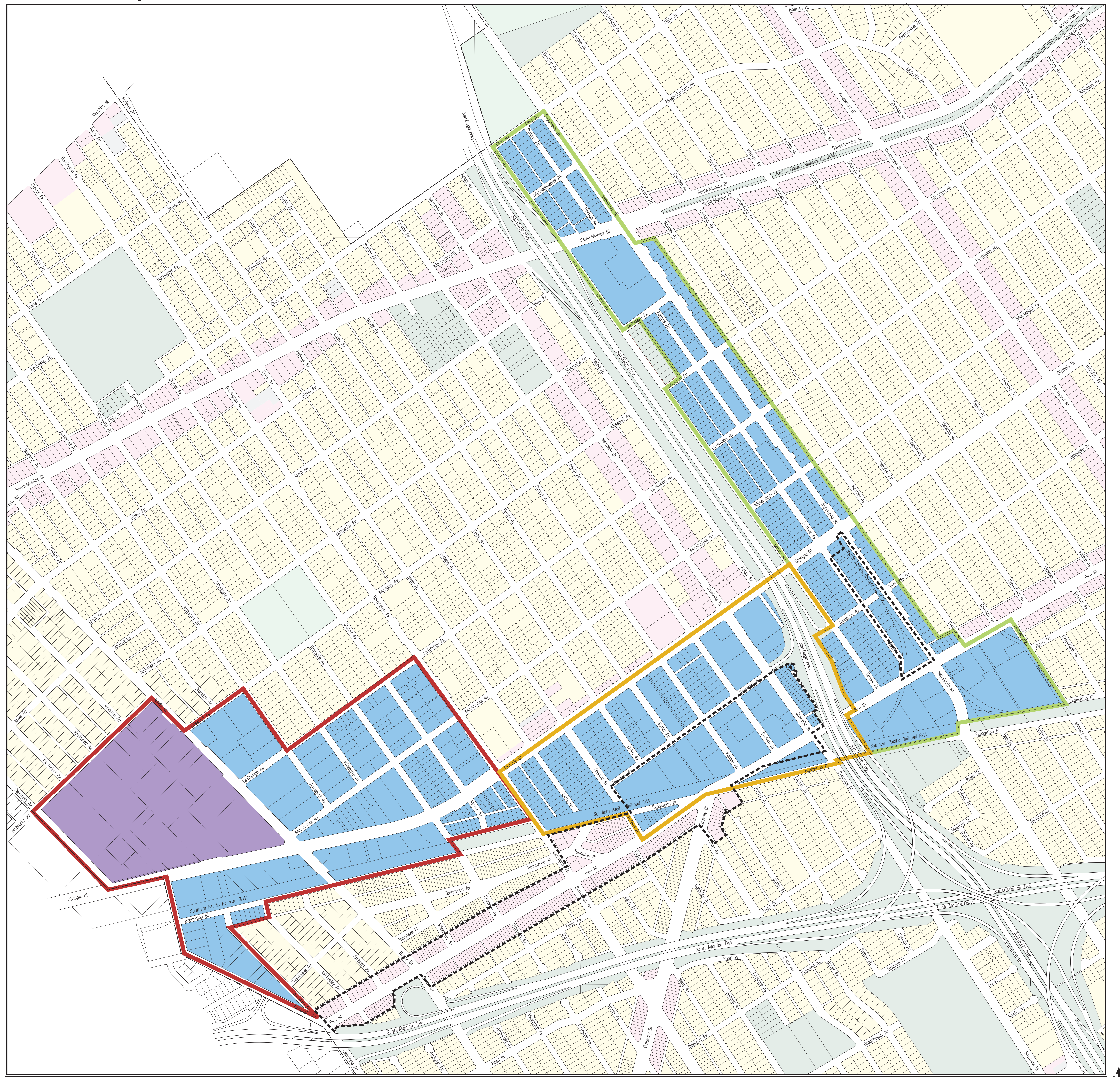


Industrial Survey: Westside Area



Subarea Boundaries

- Subarea 1
- Subarea 2
- Subarea 3

Recommendations

- Industrial – No Residential
- Study Area – Allow Mixed Use and Office

Generalized Zoning

- Single Family, Agricultural
- Residential
- Commercial
- Industrial
- Parking
- Open Space
- Public Facility

Special Planning Districts

- Sepulveda Corridor SPA
- West Pico Boulevard CDO

Westside Area Industrial Land Use Survey Preliminary Staff Recommendations 7-20-06