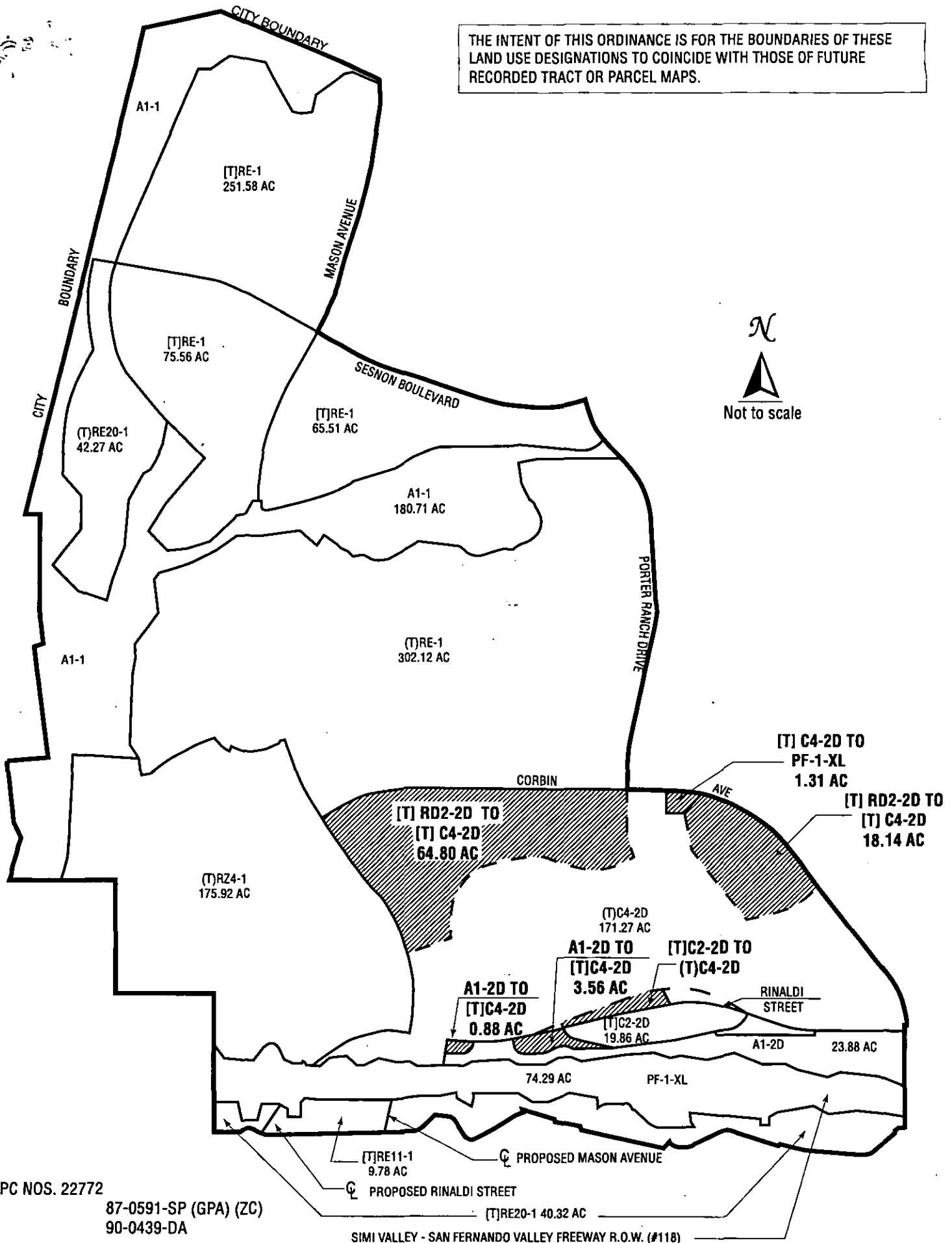


THE INTENT OF THIS ORDINANCE IS FOR THE BOUNDARIES OF THESE LAND USE DESIGNATIONS TO COINCIDE WITH THOSE OF FUTURE RECORDED TRACT OR PARCEL MAPS.



87-0591-SP (GPA) (ZC)
 90-0439-DA

SIMI VALLEY - SAN FERNANDO VALLEY FREEWAY R.O.W. (#118)

PORTER RANCH SPECIFIC PLAN AREA - ZONE CHANGE ORDINANCE MAP

Sec. 2. The City Clerk shall certify to the passage of this ordinance and have it published in a daily newspaper printed and published in the City of Los Angeles.

I hereby certify that the foregoing ordinance was introduced at the meeting of the Council of the City of Los Angeles MAR 21 2001 and was passed at its meeting of MAR 28 2001

J. MICHAEL CAREY, City Clerk

By Marie Kohanski
Deputy

Approved APR 05 2001

[Signature]
Mayor

Approved as to Form and Legality

James K. Hahn, City Attorney

By _____

File No. CF 99-0892 S3

Pursuant to Charter Section 559, I approve this ordinance and recommend its adoption on behalf of the City Planning Commission.

February 22, 2001

see attached report.

[Signature]
CON HOWE
Director of Planning