

Figure 1. Step Backs



Step taller buildings back at upper levels. Building structures should not overwhelm adjacent pedestrian areas. Stepbacks on taller buildings allow the maintenance of small scale character near street level.

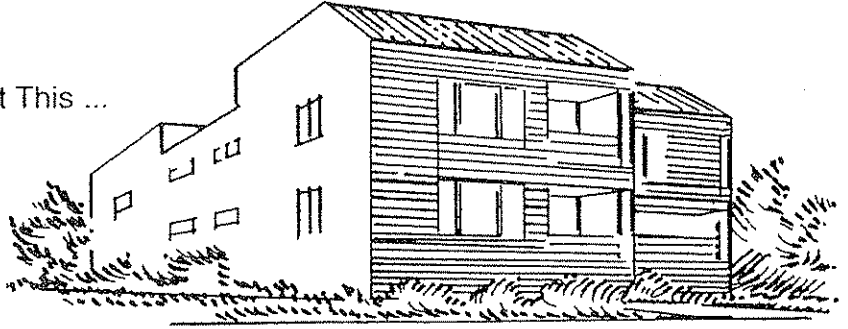
Figure 2. Transparent Building Element / Facade Treatment



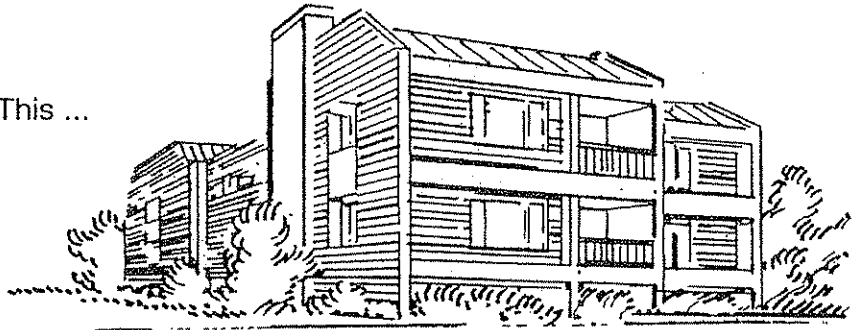
### Figure 3. Facade Treatments on Sides and Rear of Buildings

Similar Architectural Treatments  
on Sides and Rear of Building

Not This ...



This ...

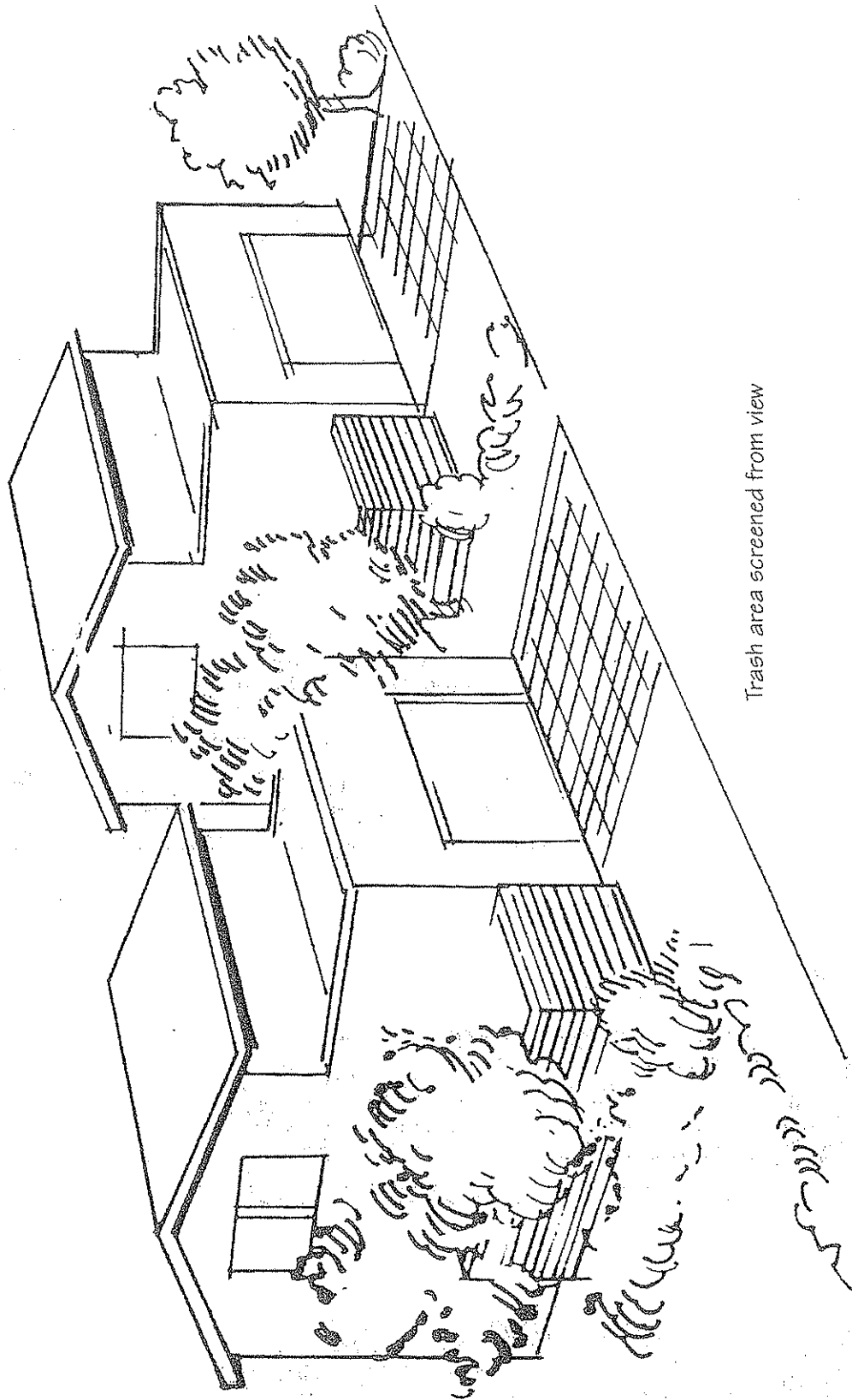


### Figure 4. Facade Treatment and Roof Lines



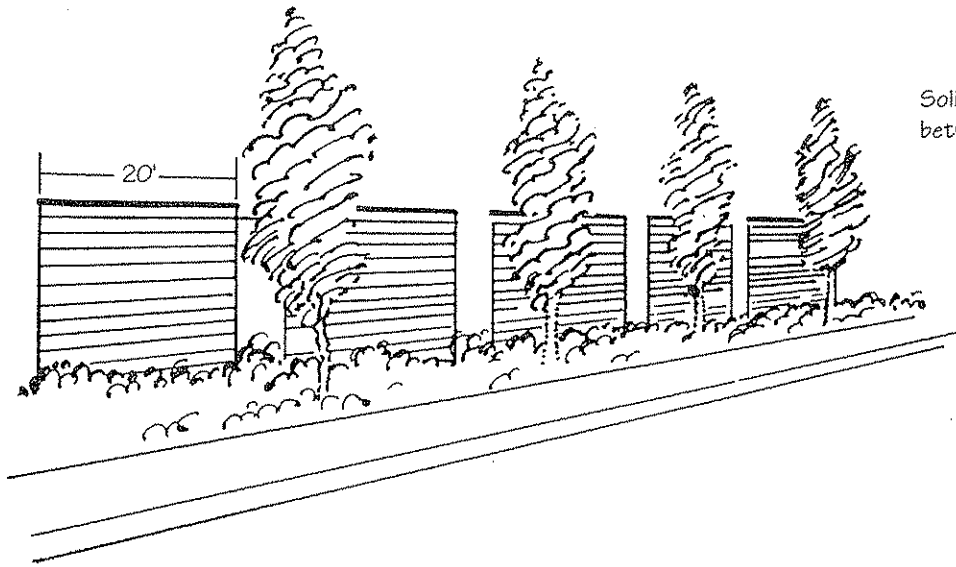
Balconies, windows and other recessed & projecting  
features are used to break up the mass of the Building.

Figure 5. Screening Trash and Recycling Areas.



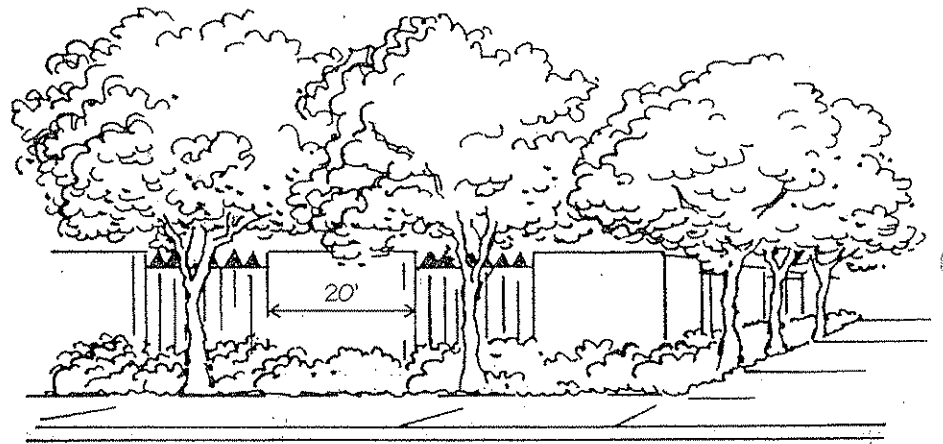
Trash area screened from view

# Figure 6. Walls and Fences

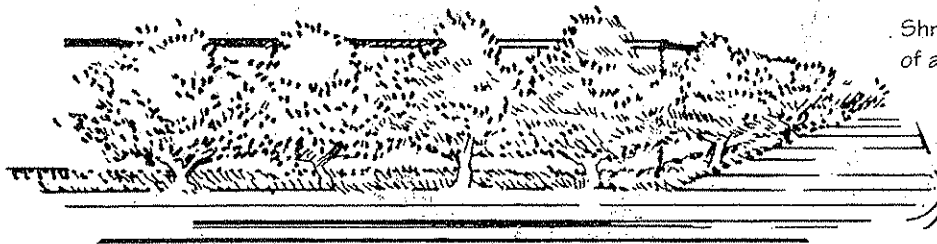


Solid Staggered Wall with Landscaping between Wall and Sidewalk

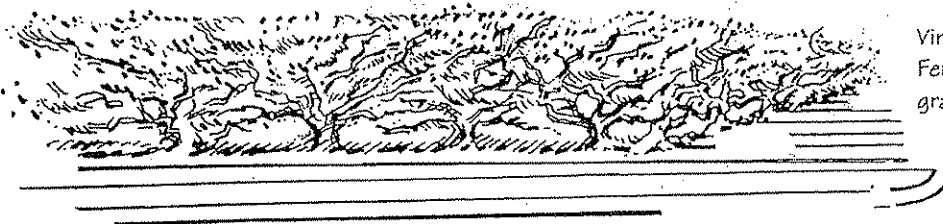
Fences with Solid Sections Interspersed with Wrought Iron Sections



## Plantings

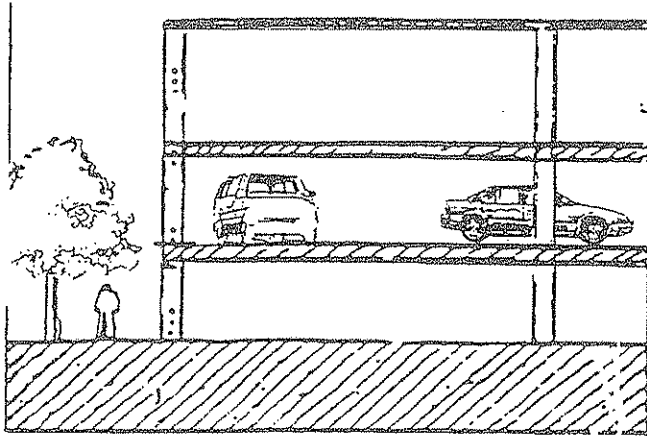


Shrubs and Ground Cover planted in front of a Fence or Wall to prevent graffiti

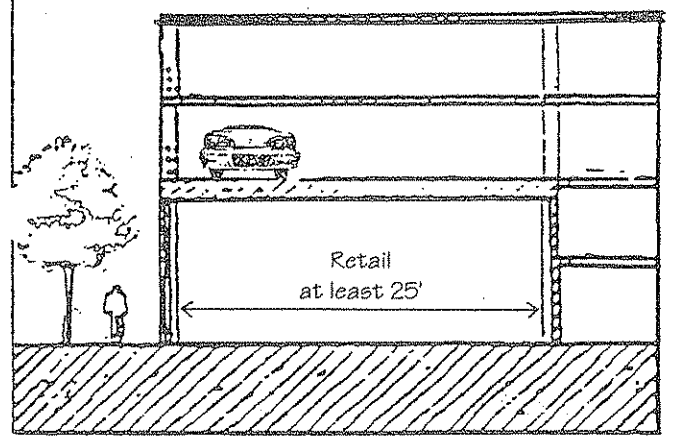


Vines that climb and cling to the Wall or Fence form an effective barrier against graffiti

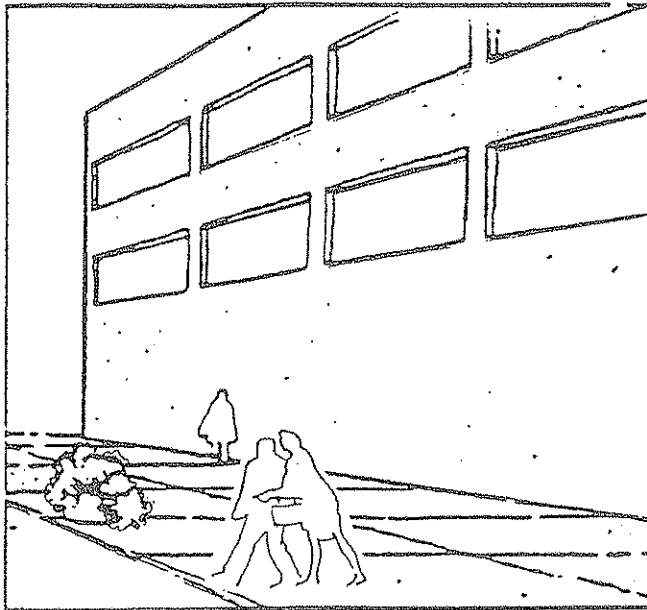
Figure 7. Parking Structure Retail Facade



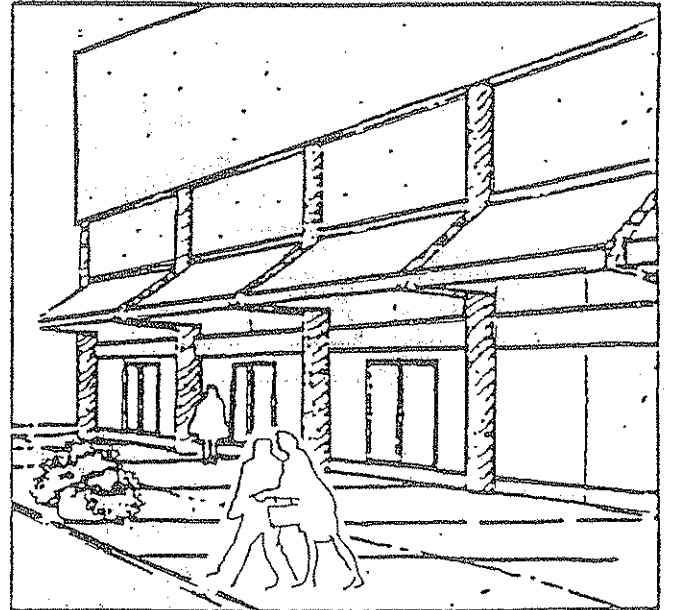
No



Yes

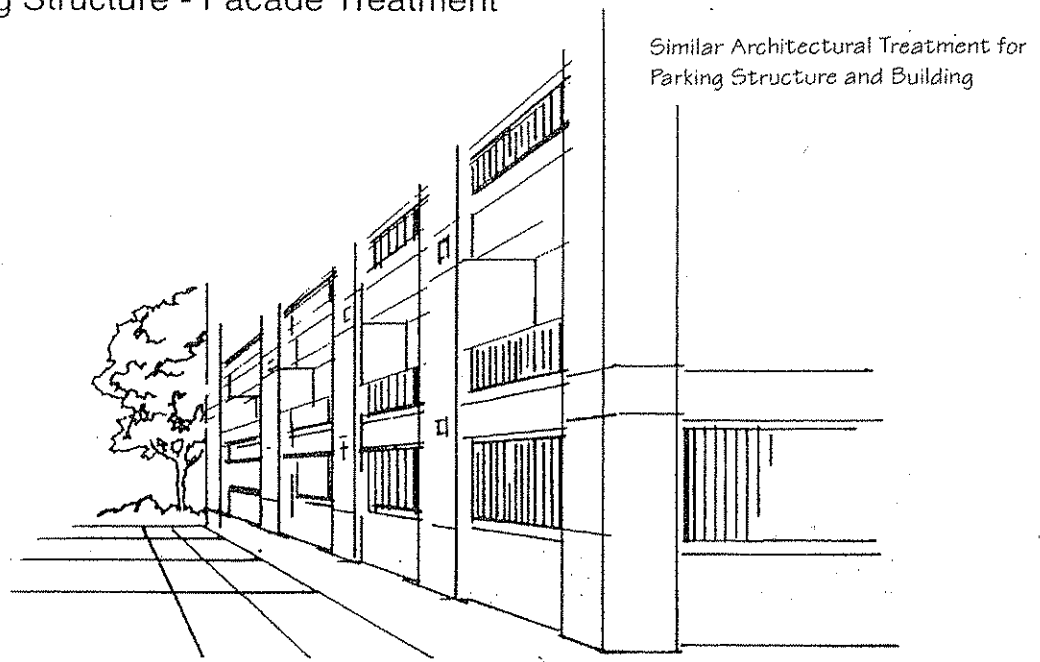


No



Yes

**Figure 8. Parking Structure - Facade Treatment**



**Figure 9. Parking Structure - Landscape Buffer**

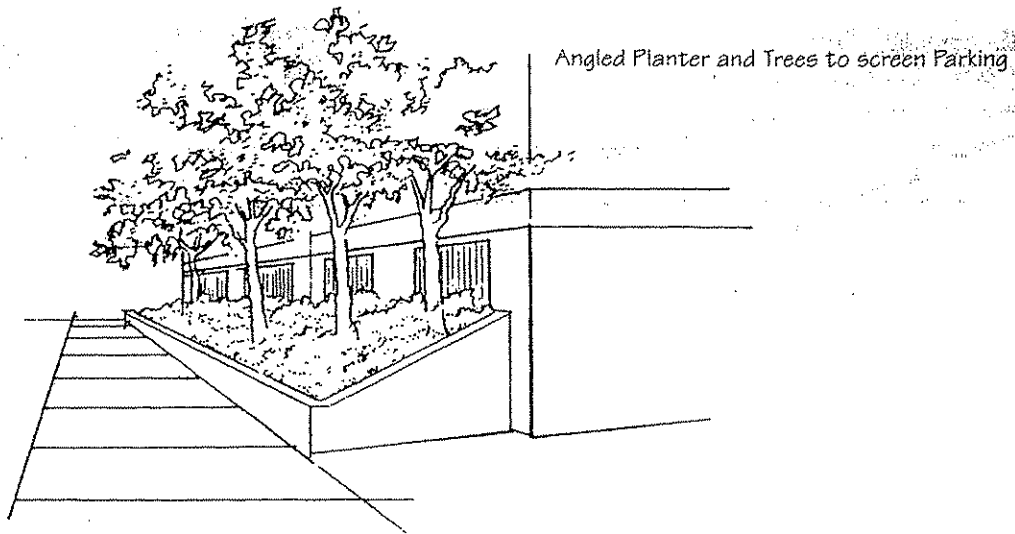
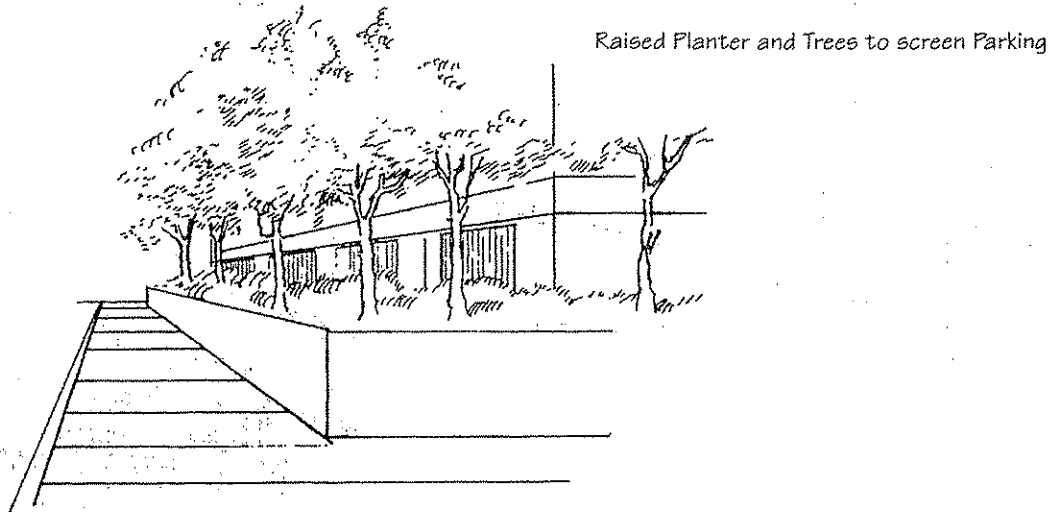
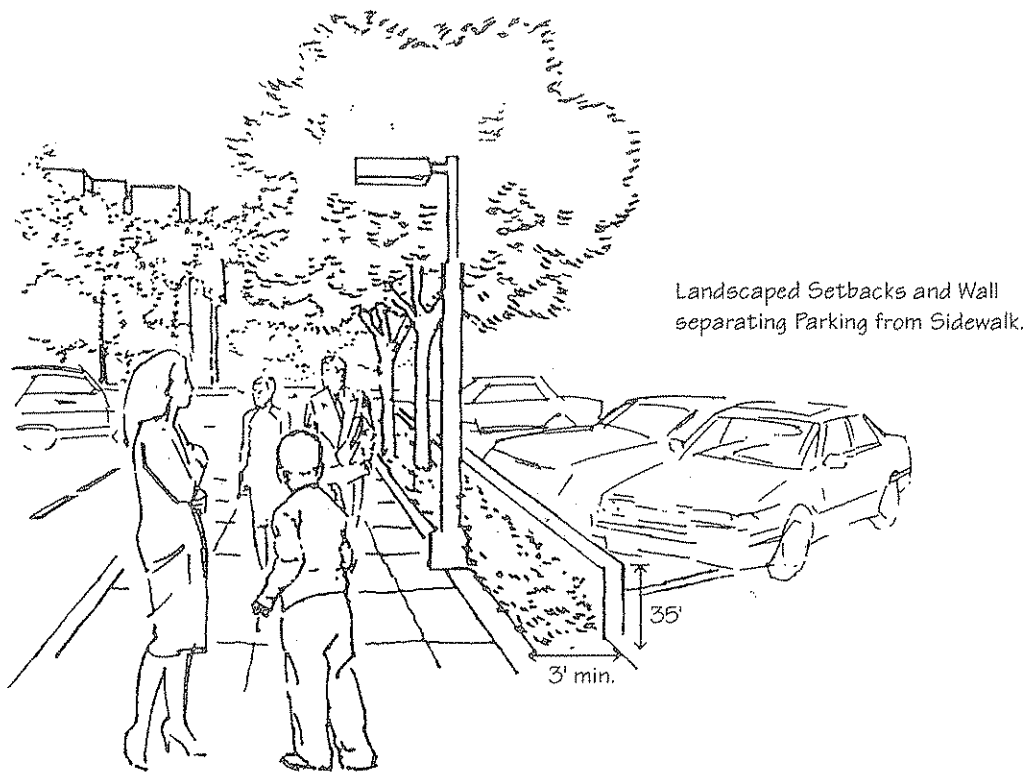


Figure 10. Surface Parking Lot Landscape Elements



Parking Lot Landscape Elements

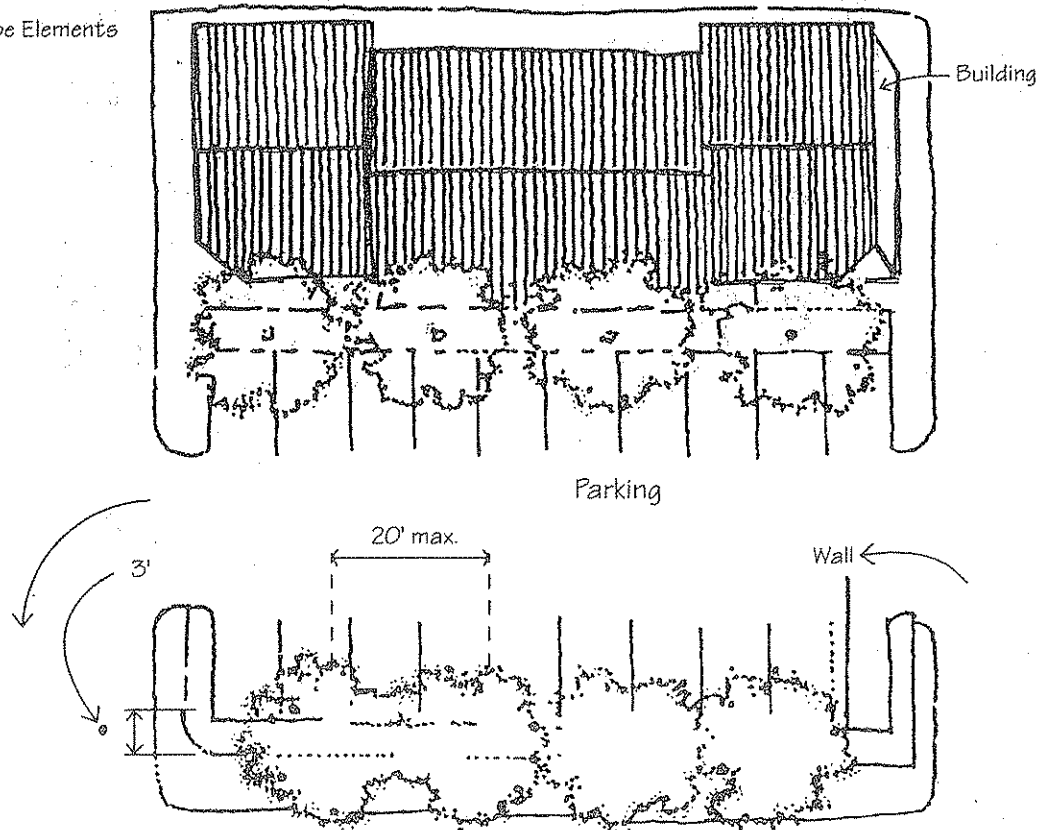


Figure 11. Facade Treatments on an Industrial Building

